



INDUSTRIAL SYSTEMS



Schedule 80 Pipes	6.03
Schedule 80 Fittings	6.11
Schedule 80 Valves	6.54

SCHEDULE 80 PIPES

GEORG FISCHER

SCHEDULE 80 PIPE SYSTEMS

CORROSION RESISTANT PRESSURE PIPE RESISTANT TO MOST ACIDS, BASES, SALTS, ALIPHATIC SOLUTIONS AND OXIDANTS

Schedule 80 uPVC (un-plasticised Poly Vinyl Chloride) is a light and flexible thermoplastic with excellent corrosion resistance. These properties and high engineering design values make it an ideal material for many and varied application. Schedule 80 uPVC can realise substantial installation and ongoing savings to installations across all industries.

Schedule 80 uPVC will not rust or corrode and is not subject to electrolysis. The correct installation of Schedule 80 uPVC will ensure years of trouble free operation. PVC can be buried and will not be affected by soil conditions or galvanic corrosion.

TEMPERATURE

Schedule 80 uPVC can be used at temperatures up to 60°C (see temperature de-rating chart).

CHEMICAL RESISTANCE

Schedule 80 uPVC is highly resistant to acids, alkalis and many corrosive materials. It is Ideal for chemical process piping and general service installation. Please contact your local Viadux representative for more information.

MAINTENANCE FREE SERVICE

Painting is not required for indoor installation. When exposed to significant sunlight we recommend the system be painted. Two coats of white, water based, outdoor paint will provide suitable protection.

APPLICATIONS

Schedule 80 uPVC pipe systems have been in service for over 50 years they have provided a versatile and dependable replacement to metallic pipe systems throughout industry and building services. Today uPVC pipe systems are the preferred option for many everyday applications. Backed by industry standards and third party certification, uPVC pipe systems deliver outstanding solutions.

PRESSURE RATING OF PIPE AT SERVICE TEMPERATURES – BAR

SIZE (IN)	23°C	32°C	38°C	43°C	48°C	54°C	60°C
15 (½")	55 Bar	43 Bar	36 Bar	29 Bar	23 Bar	17 Bar	12 Bar
20 (¾")	47	35	29	23	18	14	10
25 (1")	43	32	26	21	17	13	9
32 (1¼")	35	26	22	17	14	10	7
40 (1½")	32	24	20	16	12	9	7
50 (2")	27	20	17	13	11	8	6
65 (2½")	29	21	18	14	11	8	6
80 (3")	25	19	16	12	10	7	5
100 (4")	22	16	13	11	8	6	4
125 (5")	20	-	-	-	-	-	-
150 (6")	19	14	11	9	7	5	4
200 (8")	17	12	10	8	6	5	3
250(10")	17.2	-	-	-	-	-	-
300(12")	15.9	-	-	-	-	-	-

1. Pressure ratings at 23°C are rounded from calculated values.
2. Pressure ratings are for uPVC 12454-B pipe and are calculated from experimental long term strength of uPVC extrusion compounds. Moulding compound properties may differ from pipe compounds. Therefore systems combining pipe and moulded fittings may have lower pressure ratings than those shown in the above table. This is particularly likely at elevated temperatures above 40°C.
3. When valves, flanges and other components are added to the system the system must be re-rated to take these components ratings into account.

SCHEDULE 80 PIPE SYSTEMS

DESIGN

PIPE EXPANSION – ABOVE GROUND

Pipe expansion of a cold solvent cement welded pipeline may be accommodated using any one or combination of the following techniques:

- Pipe route planning
- Expansion loops
- Expansion joints (rubber bellows)
- Pipe wall stressing

PIPE ROUTE PLANNING

In the vast majority of cases, effective route planning can eliminate the requirement of expansion loops, or expansion bellows etc with consequent financial savings.

The basic principle of design is to allow pipe runs to move axially from a fixed point (anchor) and then guide this movement into a change of pipe direction ensuring that the pipe is free to flex as shown in figure 1.

An inappropriate installation is shown in figure 2. The pipe run is fixed at one end (A) and constrained at the other (B).

As the temperature increases the pipe will try to expand but will have nowhere to go as the ends are constrained by clip (B). Thus the pipe will 'snake' between supports as indicated.

In figure 3, effective route leg planning has eliminated the need for expansion loops etc by a simple redesign of pipe supports.

By utilising a suitable pipe support to allow free lateral pipe movement, the pipe can be installed with sufficient flexibility to expand and contract. The support at (C) remains but the clip at pipe support (B) is eliminated to give sufficient length for flexibility.

FIGURE 1

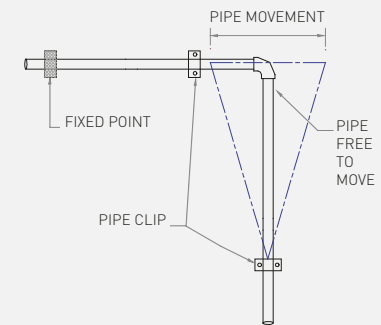


FIGURE 2

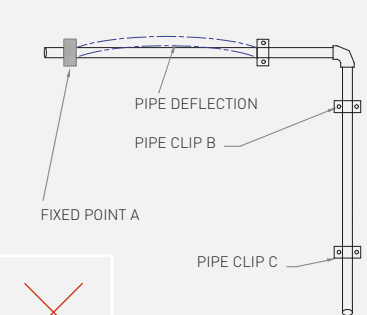
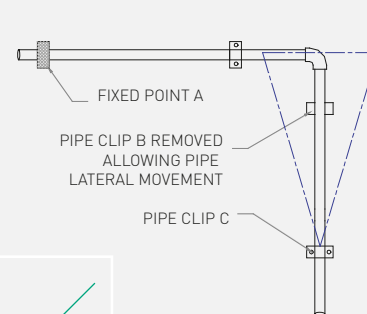


FIGURE 3



SCHEDULE 80 PIPE SYSTEMS

JOINTING

SOLVENT WELDING EQUIPMENT

- Pipe Cutter or Saw
- Chamfering Tool or File
- Felt Tip Pen
- Paper Towel or Clean Cloth
- Applicator or Brush
- Tape measure
- Primer and Cement

SOLVENT WELDING CONDITIONS

Cementing should be carried out in dry conditions at temperatures between 5°C and 40°C. Avoid cementing in direct sunlight and windy conditions.

Store Cement and Primer safely in cool dry location.

Cement and Primer is flammable keep away from naked flame and sparks from adjacent equipment.

SOLVENT WELDING PROCESS

- Make sure pipe is clean of any dust moisture or grease. Wipe with clean dry cloth.
- Shake the cement tin to ensure it is well mixed.
- Cut pipe to required length making sure that the cut is square.
- Chamfer end.
- Mark socket depth witness mark and second witness mark on pipe.
- Apply primer to pipe and socket. Vigorously work primer in to the surfaces to soften. This is critical to the solvent weld process.
- Without delay shake cement tin again. Open lid and commence application of cement to the joining surfaces of pipe and socket. You will require two coats to the pipe and a single lighter coat to the socket of the fitting.
- Quickly insert pipe (squarely) to the fitting socket.
- Check pipe insertion against witness mark.
- You should observe a uniform bead around the outside of the fitting hub. There will be a tendency for the pipe to push back – hold firmly in place to allow the cement to set (30 second to 1 minute).
- Remove excess cement.
- Leave undisturbed to set firm.
- Allow 24 hours before pressure testing.

If in doubt contact your Viadux representative.

SCHEDULE 80 PIPE SYSTEMS

INSTALLATION OF PIPE AND FITTINGS



PIPE SUPPORT

The basic principle of correct pipe support is to allow controlled axial movement of the pipe while providing lateral restraint and adequate support for the pipe.

The hanger type support does not provide lateral restraint to the pipe and therefore encourages snaking and so should be avoided except where located adjacent to the changes in direction where flexibility may be required.

Thus Pipe Supports Should:

- Be rigid in construction to adequately support pipe (fabricated mild steel angle being ideal).
- Have a wide bearing area, to allow pipe to move easily over support.
- Resist deflection, thus transferring loads to the structure.
- Be free from sharp burrs or edges to avoid cutting or damaging pipe wall.
- Allow controlled axial movement of the pipe.
- Provide lateral restraint, where required.

Pipe Clips Should:

- Allow controlled axial pipe movement
- Be free from burrs or sharp edges
- Provide required lateral restraint

- All clips shall be corrosion-resistant.
- Pipe clips, other than anchor clips shall be so constructed that, when they are securely fixed, longitudinal movement of the pipe is permitted.
- Anchor clips for fixed points shall be constructed so that when they are tightened, the fitting or pipe is securely and evenly clamped to prevent movement. The bearing width shall be 25 mm minimum.
- Metal clips shall be used in conjunction with resilient material to protect the pipe and shall have a finished clearance across the diameter to allow for radial and longitudinal movement. All materials shall be compatible with uPVC, and be smooth and free from protrusions.

Viadux stock a range of suitable pipe clips for pipe sizes up to DN 200. For sizes DN 225 and above fabricated mild steel clips with a radial clearance as per the following table are suitable.

PIPE DIAMETER	MINIMUM CLEARANCE
Up to DN150	2 mm
DN200 - DN450	5 mm
DN500 - DN750	10 mm

SCHEDULE 80 PIPE SYSTEMS

INSTALLATION

PIPE CLAMPS

It is essential that plastic pipes be adequately supported. This will avoid sagging and unnecessary stress. The table below provides guidance on clip spacing. It is important to select pipe clips that allow pipe to expand and contract. Viadux offer a range of pipe clips designed specifically for plastic pipe systems.

PIPE SUPPORT PADS

The use of pipe support pads between pipe and support is strongly recommended where there is likely to be considerable movement of the pipe or chafing of the pipe from vibration. High density polyethylene sheet 6 - 10 mm is suitable for this purpose and should be installed as indicated in figure 4.

Width of pipe supports must be sufficient to allow free axial movement of the pipe without binding.

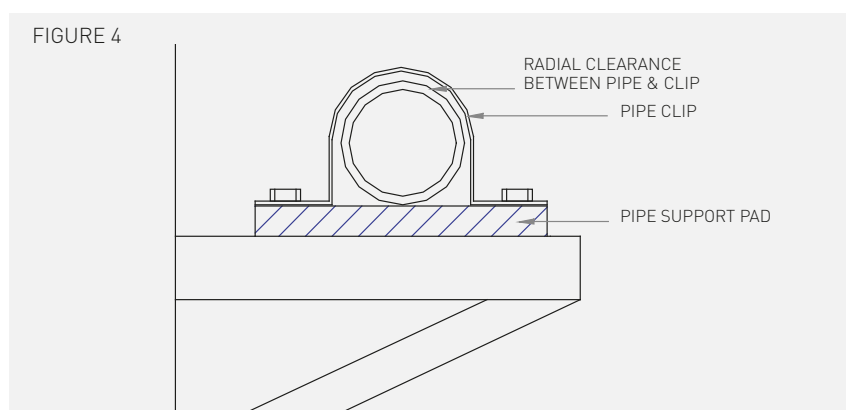
The following table gives recommended pipe support widths.

PIPE DIAMETER	MINIMUM SUPPORT WIDTH
Up to DN300	25 mm
DN350 - DN375	60 mm
DN400 - DN450	100 mm
DN500 - DN750	300 mm

SIZE (DN)	16°C	27°C	38°C	50°C	60°C
15 (½")	1500	1350	1400	900	1650
20 (¾")	1650	1550	1400	900	750
25 (1")	1850	1650	1550	1050	900
32 (1¼")	1850	1850	1700	750	900
40 (1½")	2000	1850	1700	1050	1050
50 (2")	2150	2000	1850	1200	1050
65 (2½")	2300	2300	2000	1400	1200
80 (3")	2500	2300	2150	1400	1200
100 (4")	2750	2600	2300	1550	1350
125 (5")	-	2750	-	-	-
150 (6")	3050	2900	2750	1850	1550
200 (8")	-	2650	-	-	-
250 (10")	-	2550	-	-	-
300 (12")	-	2400	-	-	-

Spacing in mm

FIGURE 4





SCHEDULE 80 PIPE SYSTEMS

SCH 80 PVC - U PIPE



FEATURES

Conforms to ASTM D-1785, Type 1, Grade 1.

All PVC piping is produced from NSF approved compounds conforming to ASTM D-1784.

Standard length 5.8m.

Handles temperatures up to 60°C.

Not affected by soil in buried applications.

Contains UV stabilisers TiO₂ and Carbon Black.

Economical to install and maintain.

IPS-sized (inches) 1/2-24".

Can be threaded (recommend schedule 80 or greater).

Normally grey in colour.

PIPE 5.8 METER

CODE	SIZE (MM)	LENGTH (MM)	WIDTH (MM)	HEIGHT (MM)	WEIGHT (KG)
1537680	15	580.0	2.1	2.1	1.79
1537681	20	580.0	2.7	2.7	2.49
1537682	25	580.0	3.3	3.3	3.71
1537683	32	580.0	4.2	4.2	5.10
1537684	40	580.0	4.8	4.8	6.25
1537685	50	580.0	6.0	6.0	8.40
1537686	65	580.0	7.3	7.3	12.86
1537687	80	580.0	8.9	8.9	17.08
1537688	100	580.0	11.4	11.4	24.43
1537689	150	580.0	15.2	15.2	47.53

PIPE 6 METER

CODE	SIZE (MM)	LENGTH (MM)	WIDTH (MM)	HEIGHT (MM)	WEIGHT (KG)
1532117	200	6096.0	219.1	219.1	3.65
1533187	250	6096.0	273.1	273.1	5.42
1533188	300	6096.0	323.9	323.9	7.46

CHLORFIT PE PIPE 6 METER

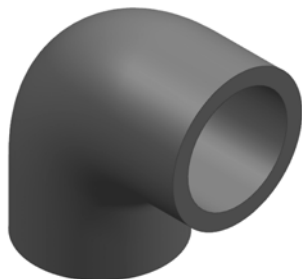
CODE	SIZE (MM)	LENGTH (MM)	WIDTH (MM)	HEIGHT (MM)	WEIGHT (KG)
1538784	15	6096.0	21.3	21.3	0.10
1538785	20	6096.0	26.7	26.7	0.14
1538786	25	6096.0	33.4	33.4	0.20
1538787	32	6096.0	42.2	42.2	0.28
1538788	40	6096.0	48.3	48.3	0.34
1538789	50	6096.0	60.3	60.3	0.47
1538790	65	6096.0	73.0	73.0	0.72
1538791	80	6096.0	88.9	88.9	0.96
1538792	100	6096.0	114.3	114.3	1.41
1538793	125	6096.0	141.3	141.3	1.97
1538794	150	6096.0	168.3	168.3	2.69
1538795	200	6096.0	219.1	219.1	4.11
1538796	250	6096.0	273.1	273.1	6.09

SCHEDULE 80 FITTINGS

GEORG FISCHER

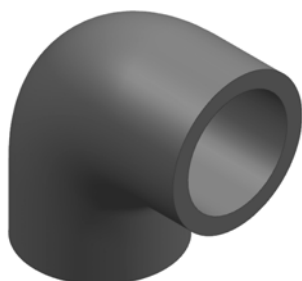
SCHEDULE 80 UPVC FITTINGS

ELBOWS



PLAIN FEMALE 90 DEGREE ELBOW

CODE	SIZE (MM)	LENGTH (MM)	WIDTH (MM)	HEIGHT (MM)	WEIGHT (KG)
1538343	10 X 10	43.5	24.3	43.5	0.02
1532009	15	49	49	13	0.04
1532010	20	54	54	19	0.05
1532011	25	69	69	25	0.08
1532012	32	80	80	32	0.13
1532013	40	87	87	38	0.18
1532014	50	97	97	51	0.25
1532015	65	122	122	64	0.46
1532016	80	146	146	76	0.70
1532017	100	180	180	102	1.29
1532120	150	269.5	192.5	269.5	3.96
1532121	200	352.6	247.7	352.6	6.39

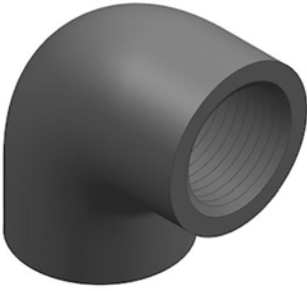


90 DEGREE ELBOW PLAIN FEMALE X NPT FEMALE

CODE	SIZE (MM)	LENGTH (MM)	WIDTH (MM)	HEIGHT (MM)	WEIGHT (KG)
1538344	15 X 15	50.3	31.2	48.0	0.04
1538345	20 X 20	57.9	36.9	52.0	0.06
1533262	25 X 25	67.5	46.2	64.9	0.10
1533263	32 X 32	81.1	55.8	75.2	0.15
1533264	40 X 40	90.3	62.7	81.7	0.20
1533265	50 X 50	106.7	77.1	96.3	0.27
1533266	80 X 80	147.9	109.9	141.1	0.85

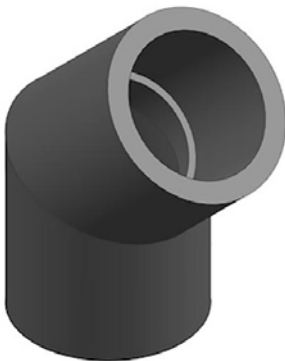
SCHEDULE 80 UPVC FITTINGS

ELBOWS



THREADED 90 DEGREE ELBOW NPT FEMALE

CODE	SIZE (MM)	LENGTH (MM)	WIDTH (MM)	HEIGHT (MM)	WEIGHT (KG)
1533267	6	34.1	22.1	34.1	0.02
1533268	10	37.5	25.7	37.5	0.02
1533269	15	47.1	31.4	47.1	0.04
1533270	20	52.2	37.0	52.2	0.05
1533271	25	64.8	46.2	64.8	0.10
1533272	32	74.8	55.9	74.8	0.15
1533273	40	82.4	62.9	82.4	0.20
1533274	50	96.2	75.7	96.2	0.28
1533275	65	129.0	89.3	129.0	0.58
1533276	80	142.7	108.6	142.7	0.87
1533277	100	172.4	136.5	172.4	1.38

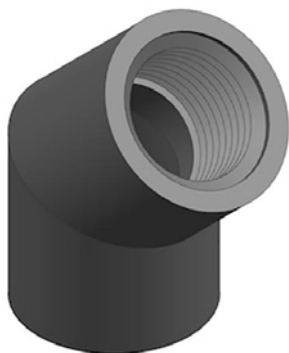


PLAIN FEMALE 45 DEGREE ELBOW

CODE	SIZE (MM)	LENGTH (MM)	WIDTH (MM)	HEIGHT (MM)	WEIGHT (KG)
1533279	10	39.7	26.7	50.3	0.02
1532018	15	62	43	13	0.03
1532019	20	67	53	19	0.04
1532020	25	75	63	25	0.07
1532021	32	77.3	53.2	95.9	0.11
1532022	40	96	86	38	0.13
1532023	50	110	106	51	0.22
1532024	65	122.1	89.2	142.6	0.38
1532025	80	138.7	106.3	153.4	0.59
1532026	100	172.8	132.8	190.3	0.99
1532122	150	251.9	192.9	278.9	3.00
1532123	200	321.5	247.1	354.2	5.26

SCHEDULE 80 UPVC FITTINGS

ELBOWS



THREADED 45 DEGREE ELBOW NPT FEMALE

CODE	SIZE (MM)	LENGTH (MM)	WIDTH (MM)	HEIGHT (MM)	WEIGHT (KG)
1533280	6	32.0	22.9	38.2	0.02
1533281	10	38.1	26.7	46.5	0.02
1533282	15	43.8	31.2	54.8	0.04
1533283	20	52.1	37.0	62.4	0.05
1533284	25	61.0	45.6	73.2	0.08
1533285	32	70.6	55.0	80.1	0.12
1533286	40	77.5	62.2	85.0	0.16
1533287	50	93.8	74.9	101.2	0.24
1533288	80	133.8	107.2	142.7	0.65
1533289	100	163.3	132.9	167.4	1.14

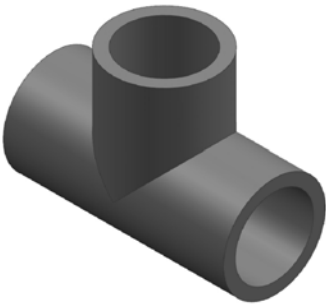


LONG RADIUS PLAIN FEMALE 90 DEGREE BEND

CODE	SIZE (MM)	LENGTH (MM)	WIDTH (MM)	HEIGHT (MM)	WEIGHT (KG)
1538823	15	70.0	70.0	27.0	0.03
1538824	20	86.0	86.0	33.0	0.05
1538825	25	150.0	63.2	39.0	0.07
1538826	32	85.0	55.0	190.0	0.21
1538827	40	150.0	64.0	170.0	0.31
1538828	50	285.0	125.0	80.0	0.56
1538829	80	400.0	173.0	115.0	1.76
1538830	100	500.0	135.0	135.0	2.67
1538831	150	510.0	510.0	200.0	7.70

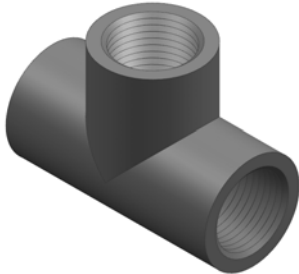
SCHEDULE 80 UPVC SOCKETS

TEES



PLAIN FEMALE TEE

CODE	SIZE (MM)	LENGTH (MM)	WIDTH (MM)	HEIGHT (MM)	WEIGHT (KG)
1538329	10	58.5	24.3	43.7	0.03
1532027	15	73	51	13	0.05
1532028	20	82	59	19	0.07
1532029	25	94	69	25	0.11
1532030	32	111	82	32	0.16
1532031	40	124	91	38	0.22
1532032	50	143	108	51	0.33
1532033	65	169.2	89.6	130.2	0.78
1532034	80	189.2	105.7	149.8	1.08
1532035	100	235.1	133.9	189.1	1.86
1532118	150	334.5	192.9	266.7	5.00
1532119	200	441.7	247.3	348.1	9.29



THREADED TEE NPT FEMALE

CODE	SIZE (MM)	LENGTH (MM)	WIDTH (MM)	HEIGHT (MM)	WEIGHT (KG)
1538337	6	46.8	21.6	34.6	0.02
1538338	10	50.8	25.4	38.5	0.03
1533249	15	64.8	30.9	47.6	0.05
1538339	20	70.2	36.8	53.0	0.14
1538340	25	86.3	46.2	68.6	0.14
1538341	32	97.5	55.9	76.9	0.21
1533253	40	104.9	62.6	84.0	0.28
1533254	50	119.1	75.8	98.7	0.40
1533255	65	146.3	88.0	116.9	0.80
1538342	80	178.0	110.2	144.5	1.15
1533257	100	207.6	136.7	171.7	1.76

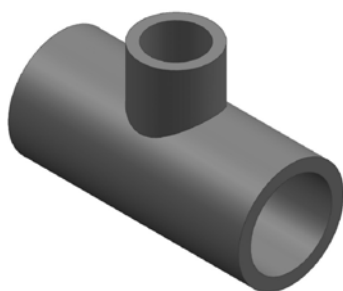


THREADED TEE BSP FEMALE PARALLEL

CODE	SIZE (MM)	LENGTH (MM)	WIDTH (MM)	HEIGHT (MM)	WEIGHT (KG)
1538871	15	55.0	40.0	30.0	0.03
1538872	20	66.0	51.0	33.0	0.04
1538873	25	78.0	60.0	41.0	0.07
1538874	32	100.0	70.0	50.0	0.15
1538875	40	118.0	89.0	61.0	0.27
1538876	50	146.0	110.0	79.0	0.49

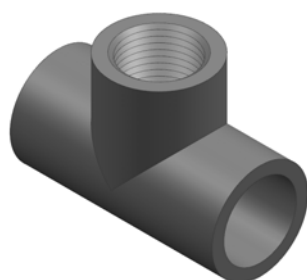
SCHEDULE 80 UPVC FITTINGS

TEES



PLAIN FEMALE REDUCING TEE

CODE	SIZE (MM)	LENGTH (MM)	WIDTH (MM)	HEIGHT (MM)	WEIGHT (KG)
1532092	20 X 15	82.3	36.6	59.4	0.11
1532093	25 X 15	95.1	43.5	66.2	0.14
1532094	25 X 20	94.8	43.6	69.4	0.15
1533233	40 X 15	3.8	2.7	1.5	0.14
1532095	40 X 20	102	70	38	0.15
1532096	40 X 25	108	75	38	0.16
1533234	50 X 15	4.1	3.2	2.0	0.20
1533235	50 X 20	4.3	3.3	2.0	0.21
1532097	50 X 25	114	87	51	0.23
1532098	50 X 40	130	94	51	0.28
1533236	65 X 50	154.9	88.6	127.0	0.54
1533237	80 X 50	162.4	105.7	144.4	0.72
1538330	100 X 25	152.4	133.1	156.0	0.83
1533238	100 X 50	179.0	132.6	170.6	2.28
1533239	100 X 80	210.3	133.5	182.0	1.47
1538739	150 X 25	226.0	195.6	237.8	5.03
1538331	150 X 50	226.0	195.6	229.8	5.32
1538743	150 X 80	333.1	192.4	279.4	5.29
1533240	150 X 100	333.1	192.4	251.4	4.40
1538332	200 X 100	426.0	250.0	342.0	10.66
1533241	200 X 150	386.7	247.4	324.0	9.03

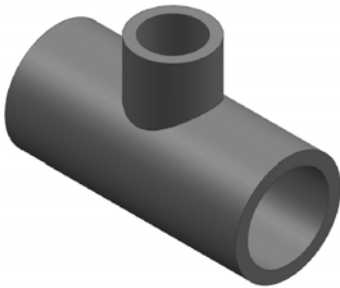


FACUCET TEE PLAIN FEMALE X NPT FEMALE BRANCH

CODE	SIZE (MM)	LENGTH (MM)	WIDTH (MM)	HEIGHT (MM)	WEIGHT (KG)
1538333	15 X 15	71.4	29.6	47.8	0.06
1538334	20 X 20	81.2	35.2	52.3	0.08
1538335	25 X 25	93.0	44.3	66.1	0.15
1533245	40 X 40	122.4	59.4	82.5	0.26
1538336	50 X 50	141.9	72.7	96.7	0.41

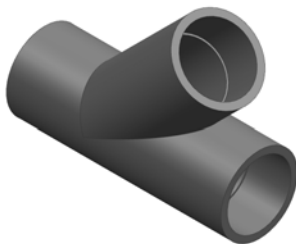
SCHEDULE 80 UPVC FITTINGS

TEES



BUSHED PLAIN FEMALE REDUCING TEE

CODE	SIZE (MM)	LENGTH (MM)	WIDTH (MM)	HEIGHT (MM)	WEIGHT (KG)
1538717	32 X 15	101.2	53.0	86.2	0.24
1538718	32 X 20	101.2	53.0	86.1	0.24
1538719	40 X 32	123.9	59.4	99.4	0.34
1538720	50 X 32	142.7	73.4	115.6	0.50
1538721	65 X 15	154.9	88.6	129.3	0.66
1538722	65 X 20	154.9	88.6	129.4	0.67
1538723	65 X 25	154.9	88.6	129.7	0.64
1538724	65 X 32	154.9	88.6	129.2	0.66
1538725	65 X 40	154.9	88.6	129.3	0.64
1538726	80 X 15	162.4	105.7	146.3	0.84
1538727	80 X 20	162.4	105.7	146.4	0.82
1538728	80 X 25	162.4	105.7	146.6	0.82
1538729	80 X 32	162.4	105.7	146.1	0.81
1538730	80 X 40	162.4	105.7	146.3	0.85
1538731	80 X 65	189.2	105.7	156.1	1.29
1538732	100 X 15	179.0	132.6	172.6	2.39
1538733	100 X 20	179.0	132.6	172.8	2.35
1538734	100 X 32	179.0	132.6	172.5	2.39
1538735	100 X 40	179.0	132.6	172.6	2.35
1538736	100 X 65	210.3	133.5	184.2	1.71
1538737	150 X 15	226.0	195.6	237.4	5.32
1538738	150 X 20	226.0	195.6	237.6	5.32
1538740	150 X 32	226.0	195.6	237.3	5.04
1538741	150 X 40	226.0	195.6	237.4	5.02
1538742	150 X 65	333.1	192.4	287.1	5.03
1538744	200 X 50	426.0	250.0	342.4	11.20
1538745	200 X 80	426.0	250.0	324.4	11.06
1538746	200 X 100	0.0	0.0	0.0	0.00
1538747	200 X 125	426.0	250.0	402.0	9.90



PLAIN FEMALE WYE 45 DEGREE

CODE	SIZE (MM)	LENGTH (MM)	WIDTH (MM)	HEIGHT (MM)	WEIGHT (KG)
1538476	40 X 40	172.8	60.0	130.6	0.31
1538477	50 X 50	202.9	72.7	153.1	0.54
1538478	80 X 80	265.4	105.8	212.9	1.48
1538479	100 X 100	328.6	133.1	268.2	2.08
1538480	150 X 150	419.0	192.9	370.1	5.66
1538481	200 X 200	542.2	246.3	481.6	11.79
1538482	150 X 100	418.8	193.4	312.2	5.20
1538483	200 X 100	405.8	246.0	380.6	6.80

SCHEDULE 80 UPVC FITTINGS

TEES



BUSHED PLAIN FEMALE WYE

CODE	SIZE (MM)	LENGTH (MM)	WIDTH (MM)	HEIGHT (MM)	WEIGHT (KG)
1538765	50 X 40	202.9	72.7	156.1	0.62
1538766	80 X 40	265.4	105.8	218.5	1.79
1538767	80 X 50	265.4	105.8	217.8	1.81
1538768	100 X 50	328.6	133.1	270.1	2.61
1538769	100 X 80	328.6	133.1	270.1	2.47
1538770	150 X 50	418.8	193.4	315.4	5.59
1538771	150 X 80	418.8	193.4	315.4	5.59
1538772	200 X 80	405.8	245.9	385.9	7.19
1538773	200 X 150	542.2	246.3	487.6	13.60



PLAIN FEMALE CROSS

CODE	SIZE (MM)	LENGTH (MM)	WIDTH (MM)	HEIGHT (MM)	WEIGHT (KG)
1538877	20	66.5	66.5	36.6	0.05
1538878	25	80.0	80.0	45.0	0.08
1538879	32	100.0	100.0	50.0	0.13
1538880	40	120.0	119.0	64.0	0.30
1538881	50	145.0	143.0	79.0	0.56

SCHEDULE 80 UPVC FITTINGS

SOCKETS



PLAIN FEMALE SOCKET

CODE	SIZE (MM)	LENGTH (MM)	WIDTH (MM)	HEIGHT (MM)	WEIGHT (KG)
1538346	10	41.8	26.9	26.9	0.02
1532036	15	49	13	13	0.03
1532037	20	55	19	19	0.03
1532038	25	61	25	25	0.05
1532039	32	67	32	32	0.08
1532040	40	74	38	38	0.10
1532041	50	80	51	51	0.14
1532042	65	95	64	64	0.26
1532043	80	103	76	76	0.39
1532044	100	122	102	102	0.67
1532124	150	162.5	191.9	191.9	1.42
1532125	200	213.3	248.1	248.1	3.31

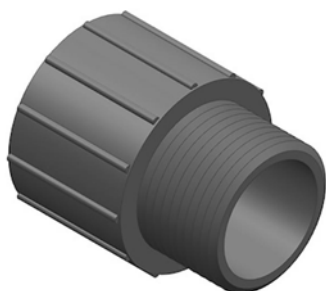


FAUCET SOCKET PLAIN FEMALE X NPT FEMALE

CODE	SIZE (MM)	LENGTH (MM)	WIDTH (MM)	HEIGHT (MM)	WEIGHT (KG)
1533375	6 X 6	36.2	24.3	24.3	0.02
1533376	10 X 10	39.7	28.1	28.1	0.02
1533377	15 X 15	45.6	35.3	35.3	0.04
1533378	20 X 20	49.9	39.6	39.6	0.05
1533379	25 X 25	57.5	48.8	48.8	0.08
1533380	32 X 32	62.1	59.1	59.1	0.11
1533381	40 X 40	65.8	66.0	66.0	0.14
1533382	50 X 50	70.2	79.7	79.7	0.20
1533383	65 X 65	89.5	95.4	95.4	0.38
1533384	80 X 80	96.5	110.0	110.0	0.47
1533385	100 X 100	108.9	134.4	134.4	0.72
1538358	150 X 150	161.9	192.1	192.1	1.40
1538359	200 X 200	212.4	234.9	234.9	2.49

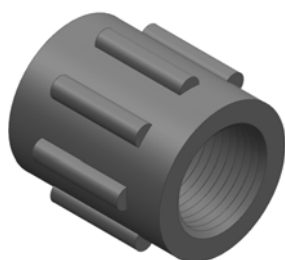
SCHEDULE 80 UPVC FITTINGS

SOCKETS



VALVE SOCKET PLAIN FEMALE X NPT MALE

CODE	SIZE (MM)	LENGTH (MM)	WIDTH (MM)	HEIGHT (MM)	WEIGHT (KG)
1533386	15 X 15	46.9	29.6	29.6	0.02
1533387	20 X 20	51.5	35.4	35.4	0.03
1533388	25 X 25	60.4	43.8	43.8	0.04
1533389	32 X 32	64.9	53.0	53.0	0.06
1533390	40 X 40	68.3	59.4	59.4	0.08
1533391	50 X 50	71.9	72.1	72.1	0.12
1533392	65 X 65	93.9	88.4	88.4	0.21
1533393	80 X 80	98.9	106.0	106.0	0.31
1533394	100 X 100	111.6	132.7	132.7	0.51



THREADED SOCKET NPT FEMALE

CODE	SIZE (MM)	LENGTH (MM)	WIDTH (MM)	HEIGHT (MM)	WEIGHT (KG)
1533295	6	32.9	22.8	22.8	0.01
1533296	10	34.2	27.1	27.1	0.02
1533297	15	42.7	35.6	35.6	0.03
1533298	20	44.5	39.9	39.9	0.04
1533299	25	54.0	49.6	49.6	0.08
1533300	32	55.5	59.5	59.5	0.11
1533301	40	56.4	65.9	65.9	0.11
1533302	50	58.2	79.9	79.9	0.18
1533303	65	84.6	94.6	94.6	0.38
1533304	80	89.7	110.3	110.3	0.49
1533305	100	95.5	137.2	137.2	0.73



FAUCET SOCKET PLAIN FEMALE X BSP FEMALE PARALLEL

CODE	SIZE (MM)	LENGTH (MM)	WIDTH (MM)	HEIGHT (MM)	WEIGHT (KG)
1538972	10 X 10	30.0	30.0	40.0	0.02
1532074	15 X 15	33.0	36.0	37.0	0.02
1532075	20 X 20	40.0	42.0	42.0	0.03
1532076	25 X 25	45.0	44.0	45.0	0.06
1532077	32 X 32	55.0	52.0	51.0	0.08
1532078	40 X 40	59.0	66.0	66.0	0.13
1532079	50 X 50	69.0	79.0	79.0	0.22

SCHEDULE 80 UPVC FITTINGS

SOCKETS



VALVE SOCKET PLAIN FEMALE X BSP MALE TAPERED

CODE	SIZE (MM)	LENGTH (MM)	WIDTH (MM)	HEIGHT (MM)	WEIGHT (KG)
1533230	10 X 10	40.0	30.0	30.0	0.01
1532086	15 X 15	32.0	32.0	41.0	0.02
1538989	15 X 20	4.0	4.0	4.0	0.05
1532087	20 X 20	45.0	40.0	40.0	0.02
1538990	20 X 25	5.0	5.0	5.0	0.03
1532088	25 X 25	53.0	46.0	46.0	0.04
1538991	25 X 32	6.0	6.0	6.0	0.05
1533232	32 X 25	101.2	53.0	81.9	0.20
1532089	32 X 32	58.8	57.5	57.5	0.06
1538992	32 X 40	6.0	6.0	6.0	0.06
1533233	40 X 15	3.8	2.7	1.5	0.14
1532090	40 X 40	62.0	63.0	66.0	0.10
1538993	40 X 50	90.0	90.0	90.0	0.07
1533234	50 X 15	4.1	3.2	2.0	0.20
1533235	50 X 20	4.3	3.3	2.0	0.21
1532091	50 X 50	89.0	78.0	78.0	0.18
1533236	65 X 50	154.9	88.6	127.0	0.54
1533237	80 X 50	162.4	105.7	144.4	0.72
1533238	100 X 50	179.0	132.6	170.6	2.28
1533239	100 X 80	210.3	133.5	182.0	1.47
1533240	150 X 100	333.1	192.4	251.4	4.40
1533241	200 X 150	386.7	247.4	324.0	9.03

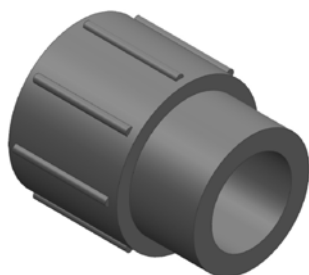


THREADED SOCKET BSP FEMALE PARALLEL

CODE	SIZE (MM)	LENGTH (MM)	WIDTH (MM)	HEIGHT (MM)	WEIGHT (KG)
1538957	6	26.0	22.0	22.0	0.01
1538958	10	30.0	30.0	30.0	0.02
1538959	15	35.0	35.0	35.0	0.02
1538960	20	40.0	42.0	42.0	0.03
1538961	25	46.0	50.0	50.0	0.05
1538962	32	60.0	60.0	50.0	0.08
1538963	40	70.0	70.0	50.0	0.11
1538964	50	79.0	79.0	56.0	0.18

SCHEDULE 80 UPVC FITTINGS

SOCKETS



PLAIN FEMALE REDUCING SOCKET

CODE	SIZE (MM)	LENGTH (MM)	WIDTH (MM)	HEIGHT (MM)	WEIGHT (KG)
1533292	20 X 15	54.1	38.7	38.7	0.04
1532133	25 X 15	55.1	47.3	47.3	0.06
1532134	25 X 20	57.4	47.2	47.2	0.06
1532135	32 X 25	64.0	56.8	56.8	0.10
1533293	40 X 20	63.6	63.9	63.9	0.39
1532136	40 X 25	67.4	63.6	63.6	0.12
1532137	40 X 32	71.5	63.6	63.6	0.12
1538347	50 X 20	79.7	77.7	77.7	0.26
1532138	50 X 25	80.1	77.4	77.4	0.30
1532139	50 X 32	77.5	73.3	73.3	0.19
1532140	50 X 40	77.8	77.2	77.2	0.21
1538348	65 X 40	85.4	89.1	89.1	0.21
1532141	80 X 50	91.7	111.7	111.7	0.42
1532142	100 X 80	111.3	140.1	140.1	0.76
1532143	150 X 100	258.4	201.1	201.1	3.05
1532144	200 X 150	233.1	253.9	253.9	3.44



THREADED REDUCING SOCKET NPT

CODE	SIZE (MM)	LENGTH (MM)	WIDTH (MM)	HEIGHT (MM)	WEIGHT (KG)
1538349	10 X 6	32.8	26.7	26.7	0.02
1538350	15 X 6	36.7	32.6	32.6	0.03
1538351	15 X 10	37.1	32.6	32.6	0.03
1538352	20 X 15	42.7	38.5	38.5	0.04
1538353	25 X 15	46.7	47.2	47.2	0.06
1538354	25 X 20	47.8	47.1	47.1	0.06
1538355	32 X 20	48.4	56.5	56.5	0.08
1538356	40 X 25	52.3	63.6	63.6	0.11
1538357	50 X 40	55.4	77.0	77.0	0.15



BUSHED PLAIN FEMALE REDUCING SOCKET

CODE	SIZE (MM)	LENGTH (MM)	WIDTH (MM)	HEIGHT (MM)	WEIGHT (KG)
1538748	40 X 15	74.6	63.6	63.6	0.39
1538749	50 X 15	87.4	77.4	77.4	0.25
1538750	50 X 20	0.0	0.0	0.0	0.00
1538751	65 X 50	103.5	88.6	88.6	0.50
1538752	80 X 25	115.9	106.5	106.5	0.71
1538753	80 X 32	123.1	106.5	106.5	0.52
1538754	80 X 40	116.3	106.5	106.5	0.75
1538755	80 X 65	116.3	111.5	990.6	0.65
1538756	100 X 50	125.6	140.1	140.1	1.09
1538757	150 X 50	269.5	201.1	201.1	3.58
1538758	200 X 100	249.1	253.9	253.9	5.08

SCHEDULE 80 UPVC FITTINGS

ADAPTORS



PLAIN FEMALE ADAPTOR SOCKET

CODE	SIZE (MM)	LENGTH (MM)	WIDTH (MM)	HEIGHT (MM)	WEIGHT (KG)
1538995	16 X 10	40.0	20.0	20.0	0.01
1538996	20 X 15	39.0	26.0	26.0	0.01
1538997	25 X 20	50.0	30.0	30.0	0.02
1538998	32 X 25	51.0	40.5	40.5	0.03
1538999	40 X 32	61.0	50.0	50.0	0.05
1539000	50 X 40	65.0	57.0	60.0	0.07
1539001	63 X 50	80.0	75.5	75.5	0.16
1539002	90 X 80	105.0	107.0	111.0	0.34
1539003	110 X 100	13.0	12.5	12.3	0.49



FAUCET ADAPTOR PLAIN MALE X BSP FEMALE PARALLEL

CODE	SIZE (MM)	LENGTH (MM)	WIDTH (MM)	HEIGHT (MM)	WEIGHT (KG)
1532080	15 X 15	36.3	28.4	28.4	0.01
1532081	20 X 20	41.0	33.0	33.0	0.02
1532082	25 X 25	49.0	41.0	41.0	0.04
1532083	32 X 32	56.0	51.0	51.0	0.07
1532084	40 X 40	65.0	60.0	63.0	0.09
1532085	50 X 50	87.0	78.0	81.0	0.16



VALVE ADAPTOR PLAIN MALE SPITGOT X BSP MALE TAPERED

CODE	SIZE (MM)	LENGTH (MM)	WIDTH (MM)	HEIGHT (MM)	WEIGHT (KG)
1538986	15 X 15	43.0	31.0	36.0	0.02
1538987	20 X 20	50.0	40.0	40.0	0.02
1538988	25 X 25	60.0	50.0	50.0	0.04

SCHEDULE 80 UPVC FITTINGS

ADAPTORS



ADAPTOR BARREL UNION (PLAIN FEMALE X PLAIN FEMALE)
EPDM SEAL BS IMPERIAL X METRIC

CODE	SIZE (MM)	LENGTH (MM)	WIDTH (MM)	HEIGHT (MM)	WEIGHT (KG)
1538905	10 X 16	4.0	4.0	4.0	0.03
1538906	15 X 20	40.0	50.0	40.0	0.04
1538907	20 X 25	50.0	50.0	50.0	0.07
1538908	25 X 32	60.0	60.0	60.0	0.09
1538909	32 X 40	70.0	70.0	70.0	0.16
1538910	40 X 50	80.0	80.0	80.0	0.20
1538911	50 X 63	102.0	100.0	93.0	0.34



ADAPTOR BARREL UNION (PLAIN FEMALE X PLAIN FEMALE)
EPDM SEAL ASTM US IMPERIAL X METRIC

CODE	SIZE (MM)	LENGTH (MM)	WIDTH (MM)	HEIGHT (MM)	WEIGHT (KG)
1538912	10 X 16	4.0	4.0	4.0	0.02
1538913	15 X 20	43.5	52.5	43.5	0.04
1538914	20 X 25	50.0	50.0	50.0	0.07
1538915	25 X 32	60.0	60.0	60.0	0.10
1538916	32 X 40	70.0	70.0	70.0	0.17
1538917	40 X 50	80.0	80.0	80.0	0.24
1538918	50 X 63	102.0	101.0	100.0	0.36

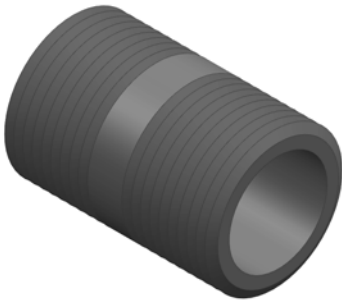


PLAIN FEMALE STUB FLANGE ADAPTOR

CODE	SIZE (MM)	LENGTH (MM)	WIDTH (MM)	HEIGHT (MM)	WEIGHT (KG)
1532550	15	21.0	33.0	46.0	0.01
1532551	20	23.0	40.0	41.0	0.01
1532552	25	50.0	49.0	26.0	0.02
1532553	40	31.0	56.0	60.0	0.04
1532554	50	35.0	72.0	72.0	0.06
1532555	65	88.0	40.0	88.0	0.11
1532556	80	56.0	125.0	123.0	0.27
1532557	100	69.0	155.0	155.0	0.42
1532558	150	216.0	216.0	94.0	1.17
1532559	200	271.0	270.0	125.0	2.03
1533629	250	328.0	153.0	328.0	3.68
1533630	300	376.0	173.0	380.0	3.42

SCHEDULE 80 UPVC FITTINGS

ADAPTORS

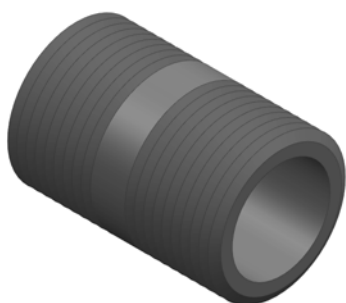


PIPE PIECE NPT MALE

CODE	SIZE (MM)	LENGTH (MM)	WIDTH (MM)	HEIGHT (MM)	WEIGHT (KG)
1538399	15 X 32	28.7	21.3	21.3	0.015
1538400	15 X 50	50.8	21.3	21.3	0.02
1538401	15 X 80	76.2	21.3	21.3	0.03
1538402	15 X 100	101.6	21.3	21.3	0.03
1538403	15 X 125	127.0	21.3	21.3	0.04
1538404	15 X 150	152.4	21.3	21.3	0.05
1538405	15 X 200	203.2	21.3	21.3	0.06
1538406	15 X 250	254.0	21.3	21.3	0.08
1538407	15 X 300	304.8	21.3	21.3	0.10
1538408	20 X 32	35.1	26.7	26.7	0.02
1538409	20 X 40	38.1	26.7	26.7	0.02
1538398	20 X 50	50.8	26.7	26.7	0.03
1538410	20 X 80	76.2	26.7	26.7	0.03
1538411	20 X 100	101.6	26.7	26.7	0.04
1538412	20 X 125	127.0	26.7	26.7	0.05
1538413	20 X 150	152.4	26.7	26.7	0.06
1538414	20 X 200	203.2	26.7	26.7	0.09
1538415	20 X 250	254.0	26.7	26.7	0.11
1538416	20 X 300	304.8	26.7	26.7	0.13
1538417	25 X 40	38.1	33.4	33.4	0.02
1538418	25 X 50	50.8	33.4	33.4	0.03
1538419	25 X 80	76.2	33.4	33.4	0.05
1538420	25 X 100	101.6	33.4	33.4	0.06
1538421	25 X 125	127.0	33.4	33.4	0.08
1538422	25 X 150	152.4	33.4	33.4	0.10
1538423	25 X 200	203.2	33.4	33.4	0.13
1538424	25 X 250	254.0	33.4	33.4	0.16
1538425	25 X 300	304.8	33.4	33.4	0.20
1538426	32 X 45	41.4	42.2	42.2	0.03
1538427	32 X 50	50.8	42.2	42.2	0.05
1538428	32 X 80	76.2	42.2	42.2	0.07
1538429	32 X 100	101.6	42.2	42.2	0.09
1538430	32 X 125	127.0	42.2	42.2	0.11
1538431	32 X 150	152.4	42.2	42.2	0.13
1538432	32 X 200	203.2	42.2	42.2	0.18
1538433	32 X 250	254.0	42.2	42.2	0.22
1538434	32 X 300	304.8	42.2	42.2	0.27
1538435	40 X 45	44.5	48.3	48.3	0.04
1538436	40 X 50	50.8	48.3	48.3	0.05
1538437	40 X 80	76.2	48.3	48.3	0.08
1538438	40 X 100	101.6	48.3	48.3	0.11
1538439	40 X 125	127.0	48.3	48.3	0.14
1538440	40 X 150	152.4	48.3	48.3	0.16
1538441	40 X 200	203.2	48.3	48.3	0.22
1538442	40 X 250	254.0	48.3	48.3	0.27

SCHEDULE 80 UPVC FITTINGS

ADAPTORS



PIPE PIECE NPT MALE CONTINUED

CODE	SIZE (MM)	LENGTH (MM)	WIDTH (MM)	HEIGHT (MM)	WEIGHT (KG)
1538443	40 X 300	304.8	48.3	48.3	0.33
1538444	50 X 50	50.8	60.3	60.3	0.05
1538445	50 X 65	63.5	60.3	60.3	0.08
1538446	50 X 80	76.2	60.3	60.3	0.11
1538447	50 X 100	101.6	60.3	60.3	0.15
1538448	50 X 125	127.0	60.3	60.3	0.19
1538449	50 X 150	152.4	60.3	60.3	0.22
1538450	50 X 200	203.2	60.3	60.3	0.29
1538451	50 X 250	254.0	60.3	60.3	0.37
1538452	50 X 300	304.8	60.3	60.3	0.44
1538453	65 X 65	63.5	73.0	73.0	0.14
1538454	65 X 80	76.2	73.0	73.0	0.17
1538455	65 X 100	101.6	73.0	73.0	0.23
1538456	65 X 125	127.0	73.0	73.0	0.28
1538457	65 X 150	152.4	73.0	73.0	0.34
1538458	65 X 200	203.2	73.0	73.0	0.45
1538459	65 X 250	254.0	73.0	73.0	0.57
1538460	65 X 300	304.8	73.0	73.0	0.68
1538461	80 X 70	66.8	88.9	88.9	0.20
1538462	80 X 80	76.2	88.9	88.9	0.23
1538463	80 X 100	101.6	88.9	88.9	0.30
1538464	80 X 125	127.0	88.9	88.9	0.38
1538465	80 X 150	152.4	88.9	88.9	0.45
1538466	80 X 200	203.2	88.9	88.9	0.60
1538467	80 X 250	254.0	88.9	88.9	0.75
1538468	80 X 300	304.8	88.9	88.9	0.90
1538469	100 X 50	73.2	114.3	114.3	0.31
1538470	100 X 100	101.6	114.3	114.3	0.43
1538471	100 X 125	127.0	114.3	114.3	0.54
1538472	100 X 150	152.4	114.3	114.3	0.64
1538473	100 X 200	203.2	114.3	114.3	0.86
1538474	100 X 250	254.0	114.3	114.3	1.08
1538475	100 X 300	304.8	114.3	114.3	1.29



THREADED HOSE BARB BSP MALE TAPERED X HOSE

CODE	SIZE (MM)	LENGTH (MM)	WIDTH (MM)	HEIGHT (MM)	WEIGHT (KG)
1533224	6 X 12	59.0	13.0	16.0	0.00
1533225	10 X 16	67.0	18.0	21.0	0.01
1539019	15 X 14	70.0	30.0	30.0	0.01
1533226	15 X 20	85.0	23.0	21.0	0.02
1539020	20 X 20	80.0	26.0	31.0	0.02
1533227	20 X 25	92.0	31.0	26.0	0.03
1539021	25 X 27	90.0	50.0	50.0	0.04
1533228	25 X 30	101.0	35.0	40.0	0.05
1533229	32 X 40	115.0	52.0	52.0	0.08

SCHEDULE 80 UPVC FITTINGS

UNIONS



BARREL UNION (PLAIN FEMALE X PLAIN FEMALE) EPDM SEAL

CODE	SIZE (MM)	LENGTH (MM)	WIDTH (MM)	HEIGHT (MM)	WEIGHT (KG)
1538890	10	40.0	40.0	30.0	0.03
1532062	15	43.7	43.7	47.7	0.04
1532063	20	50.0	50.0	54.0	0.05
1532064	25	61.0	57.8	57.8	0.08
1532065	32	7.0	7.0	7.0	0.11
1532066	40	80.0	80.0	80.0	0.22
1532067	50	93.0	100.0	100.0	0.35



BARREL UNION (PLAIN FEMALE X PLAIN FEMALE) EPDM SEAL ASTM US IMPERIAL

CODE	SIZE (MM)	LENGTH (MM)	WIDTH (MM)	HEIGHT (MM)	WEIGHT (KG)
1533531	15	60.0	50.0	50.0	0.07
1538315	20	80.0	70.0	70.0	0.11
1538316	25	100.0	90.0	90.0	0.16
1533532	32	110.0	100.0	100.0	0.22
1533533	40	120.0	110.0	110.0	0.30
1533534	50	140.0	120.0	120.0	0.56



BARREL UNION (PLAIN FEMALE X BSP FEMALE PARALLEL) EPDM SEALS

CODE	SIZE (MM)	LENGTH (MM)	WIDTH (MM)	HEIGHT (MM)	WEIGHT (KG)
1538898	10	4.0	4.0	4.0	0.03
1538899	15	5.0	4.0	4.0	0.04
1538900	20	5.0	5.0	5.0	0.07
1538901	25	3.0	5.0	5.0	0.09
1538902	32	7.0	7.0	7.0	0.17
1538903	40	8.0	8.0	8.0	0.22
1538904	50	10.0	10.0	10.0	0.41

SCHEDULE 80 UPVC FITTINGS

UNIONS



THREADED UNION (BSP FEMALE PARALLEL) EPDM SEAL

CODE	SIZE (MM)	LENGTH (MM)	WIDTH (MM)	HEIGHT (MM)	WEIGHT (KG)
1538882	6	40.0	30.0	30.0	0.02
1538883	10	40.0	30.0	30.0	0.03
1538884	15	50.0	40.0	40.0	0.04
1538885	20	50.0	50.0	50.0	0.07
1538886	25	60.0	60.0	60.0	0.09
1538887	32	70.0	70.0	70.0	0.16
1538888	40	80.0	80.0	80.0	0.22
1538889	50	102.0	98.0	101.0	0.42



BARREL UNION (PLAIN FEMALE X PLAIN FEMALE) FKM SEAL

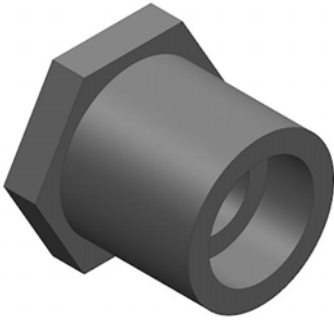
CODE	SIZE (MM)	LENGTH (MM)	WIDTH (MM)	HEIGHT (MM)	WEIGHT (KG)
1538891	10	4.0	3.0	3.0	0.03
1538892	15	40.0	40.0	40.0	0.04
1538893	20	5.0	4.0	4.0	0.06
1538894	25	5.0	5.0	5.0	0.09
1538895	32	70.0	72.0	72.0	0.13
1538896	40	80.0	80.0	70.0	0.20
1538897	50	8.0	8.0	8.0	0.37

BARREL UNION (PLAIN FEMALE X PLAIN FEMALE) FKM SEAL
ASTM US IMPERIAL

CODE	SIZE (MM)	LENGTH (MM)	WIDTH (MM)	HEIGHT (MM)	WEIGHT (KG)
1538317	15	60.0	50.0	50.0	0.07
1538318	20	80.0	70.0	70.0	0.11
1538319	25	100.0	90.0	90.0	0.16
1538320	32	110.0	100.0	100.0	0.22
1538321	40	120.0	110.0	110.0	0.30
1538322	50	140.0	120.0	120.0	0.56

SCHEDULE 80 UPVC FITTINGS

BUSHES



PLAIN REDUCING BUSH

CODE	SIZE (MM)	LENGTH (MM)	WIDTH (MM)	HEIGHT (MM)	WEIGHT (KG)
1532054	10 X 15	33	35	35	0.01
1533314	15 X 6	29.1	24.9	24.9	0.01
1533315	15 X 10	27.7	25.5	25.5	0.01
1532105	25 X 15	36	43	43	0.03
1532055	25 X 20	36	43	43	0.02
1532107	32 X 20	40	53	53	0.05
1532056	32 X 25	40	53	53	0.03
1532108	40 X 20	43	59	59	0.07
1532109	40 X 25	43	59	59	0.06
1532057	40 X 32	43	59	59	0.03
1532110	50 X 15	45	72	72	0.09
1532111	50 X 20	46	72	72	0.09
1532112	50 X 25	46	72	72	0.10
1532058	50 X 40	46	72	72	0.07
1532059	65 X 50	53.3	78.0	78.0	0.11
1532060	80 X 65	57.6	93.8	93.8	0.21
1532061	100 X 80	69.6	123.7	123.7	0.39
1532126	32 X 15	39.3	44.6	44.6	0.05
1532127	40 X 15	43	59	59	0.06
1532128	65 X 40	58.6	79.4	79.4	0.16
1533316	80 X 25	61.3	94.0	94.0	0.43
1538759	80 X 32	68.7	94.0	94.0	0.37
1532114	80 X 40	61.8	95.5	95.5	0.31
1532115	80 X 50	61.5	94.0	94.0	0.33
1532129	100 X 50	68.6	120.7	120.7	0.53
1538760	100 X 65	77.3	123.7	123.7	0.60
1532130	150 X 80	92.8	176.2	176.2	1.45
1532131	150 X 100	93.1	177.0	177.0	1.64
1538761	200 X 100	136.1	230.4	230.4	3.57
1532132	200 X 150	118.5	230.4	230.4	1.92

SCHEDULE 80 UPVC FITTINGS

BUSHES



REDUCING BUSH SHORT PATTERN

CODE	SIZE (MM)	LENGTH (MM)	WIDTH (MM)	HEIGHT (MM)	WEIGHT (KG)
1538919	15 X 10	17.0	21.0	21.0	0.00
1538921	20 X 10	20.6	27.6	27.6	0.01
1538920	20 X 15	27.0	26.0	18.0	0.01
1538924	25 X 10	23.8	34.7	34.7	0.01
1538923	25 X 15	25.0	35.0	35.0	0.02
1538922	25 X 20	23.0	33.0	32.0	0.01
1538928	32 X 10	28.5	43.8	43.7	0.02
1538927	32 X 15	28.0	44.0	42.0	0.02
1538926	32 X 20	27.0	34.0	41.0	0.03
1538925	32 X 25	28.5	43.8	43.7	0.02
1538932	40 X 15	47.0	47.0	30.0	0.03
1538931	40 X 20	48.0	32.0	47.0	0.03
1538930	40 X 25	48.0	32.0	42.0	0.04
1538929	40 X 32	49.0	49.0	31.0	0.02
1538936	50 X 20	39.0	61.0	61.0	0.06
1538935	50 X 25	61.0	38.0	61.0	0.06
1538934	50 X 32	60.0	38.0	57.0	0.07
1538933	50 X 40	63.0	39.0	56.0	0.05
1538937	65 X 50	44.0	72.0	77.0	0.09
1538941	80 X 25	90.0	89.0	51.0	0.18
1538940	80 X 40	90.0	90.0	52.0	0.18
1538939	80 X 50	51.0	90.0	90.0	0.18
1538938	80 X 65	89.0	89.0	51.0	0.12
1538942	100 X 80	64.0	115.0	110.0	0.34
1538943	125 X 100	77.0	140.0	140.0	0.53
1538944	150 X 125	168.0	168.0	92.0	0.83
1538945	200 X 150	219.0	117.0	216.0	1.77

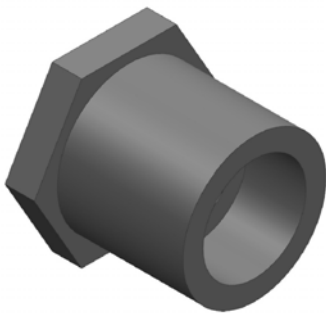


REDUCING BUSH LONG PATTERN

CODE	SIZE (MM)	LENGTH (MM)	WIDTH (MM)	HEIGHT (MM)	WEIGHT (KG)
1538984	125 X 80	140.0	140.0	170.0	0.73
1538985	150 X 100	168.0	168.0	197.0	1.31

SCHEDULE 80 UPVC FITTINGS

BUSHES



REDUCING BUSH PLAIN MALE X NPT FEMALE

CODE	SIZE (MM)	LENGTH (MM)	WIDTH (MM)	HEIGHT (MM)	WEIGHT (KG)
1538762	10 X 6	40.3	26.1	26.1	0.01
1532500	15 X 6	28.9	24.8	24.8	0.01
1532501	20 X 15	32.6	29.4	29.4	0.01
1532502	25 X 15	36.1	38.2	38.2	0.03
1532503	25 X 20	35.8	38.3	38.3	0.02
1532504	32 X 15	39.6	47.1	47.1	0.05
1532505	32 X 20	39.5	47.1	47.1	0.05
1532506	32 X 25	39.7	47.1	47.1	0.04
1532507	40 X 15	42.6	53.4	53.4	0.07
1532508	40 X 20	43.0	53.1	53.1	0.07
1532509	40 X 25	42.7	53.1	53.1	0.06
1532510	40 X 32	43.0	53.2	53.2	0.04
1532511	50 X 15	45.6	65.1	65.1	0.09
1532512	50 X 20	45.8	65.1	65.1	0.10
1532513	50 X 25	45.8	64.9	64.9	0.10
1532514	50 X 32	46.0	65.0	65.0	0.09
1532515	50 X 40	47.7	65.0	65.0	0.08
1532516	65 X 40	56.9	79.4	79.4	0.19
1532517	65 X 50	53.9	78.1	78.1	0.16
1532518	80 X 50	61.5	94.2	94.2	0.35
1532519	80 X 65	57.2	93.9	93.9	0.22
1532520	100 X 50	68.8	120.5	120.5	0.57



REDUCING BUSH PLAIN MALE X BSP FEMALE PARALLEL

CODE	SIZE (MM)	LENGTH (MM)	WIDTH (MM)	HEIGHT (MM)	WEIGHT (KG)
1538946	15 X 10	17.0	21.0	21.0	0.00
1537621	20 X 15	21.0	26.0	27.0	0.01
1538947	25 X 15	23.0	33.0	37.0	0.02
1537622	25 X 20	30.0	40.0	40.0	0.01

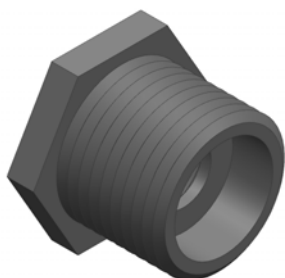


THREADED BUSH BSP MALE TAPERED X BSP FEMALE PARALLEL

CODE	SIZE (MM)	LENGTH (MM)	WIDTH (MM)	HEIGHT (MM)	WEIGHT (KG)
1538965	15 X 10	38.0	32.0	32.0	0.01
1538966	20 X 15	37.0	32.0	39.0	0.02
1538968	25 X 15	49.0	36.0	33.0	0.03
1538967	25 X 20	47.0	45.0	45.0	0.03
1538969	32 X 25	50.0	50.0	50.0	0.05
1538970	40 X 32	52.0	53.0	55.0	0.07
1538971	50 X 40	62.0	65.0	66.0	0.13

SCHEDULE 80 UPVC FITTINGS

BUSHES



THREADED BUSH NPT

CODE	SIZE (MM)	LENGTH (MM)	WIDTH (MM)	HEIGHT (MM)	WEIGHT (KG)
1533320	3/8x1/4 PVC80 Redu Bushing (MTxFT)	20.3	22.3	22.3	0.01
1533321	1/2x1/4 PVC80 Redu Bushing (MTxFT)	24.2	26.4	26.4	0.01
1533322	1/2x3/8 PVC80 Redu Bushing (MTxFT)	24.3	26.5	26.5	0.01
1533323	3/4x1/4 PVC80 Redu Bushing (MTxFT)	25.6	29.9	29.9	0.01
1533324	3/4x3/8 PVC80 Redu Bushing (MTxFT)	25.8	30.0	30.0	0.02
1533325	3/4x1/2 PVC80 Redu Bushing (MTxFT)	27.3	34.6	34.6	0.07
1533326	1x1/4 PVC80 Redu Bushing (MTxFT)	31.2	38.0	38.0	0.06
1533327	1x1/2 PVC80 Redu Bushing (MTxFT)	31.4	38.1	38.1	0.07
1533328	1x3/4 PVC80 Redu Bushing (MTxFT)	32.4	39.7	39.7	0.05
1533329	1-1/4x1/2 PVC80 Redu Bushing (MTxFT)	32.9	46.9	46.9	0.04
1533330	1-1/4x3/4 PVC80 Redu Bushing (MTxFT)	32.7	46.8	46.8	0.04
1533331	1-1/4x1 PVC80 Redu Bushing (MTxFT)	33.1	48.1	48.1	0.06
1533332	1-1/2x3/4 PVC80 Redu Bushing (MTxFT)	33.9	52.9	52.9	0.06
1533333	1-1/2x1 PVC80 Redu Bushing (MTxFT)	34.1	52.9	52.9	0.06
1533334	1-1/2x1-1/4 PVC80 Redu Bushing (MTxFT)	33.7	58.2	58.2	0.04
1533335	2x1/2 PVC80 Redu Bushing (MTxFT)	36.5	64.9	64.9	0.09
1533336	2x3/4 PVC80 Redu Bushing (MTxFT)	36.7	64.9	64.9	0.09
1533337	2x1 PVC80 Redu Bushing (MTxFT)	36.1	64.8	64.8	0.10
1533338	2x1-1/4 PVC80 Redu Bushing (MTxFT)	36.3	64.8	64.8	0.06
1533339	2x1-1/2 PVC80 Redu Bushing (MTxFT)	34.3	65.3	65.3	0.08
1533340	3x2 PVC80 Redu Bushing (MTxFT)	51.2	95.5	95.5	0.22
1533341	4x2 PVC80 Redu Bushing (MTxFT)	52.5	120.4	120.4	0.38
1533342	4x3 PVC80 Redu Bushing (MTxFT)	52.2	120.5	120.5	0.29

SCHEDULE 80 UPVC FITTINGS

CAPS & PLUGS



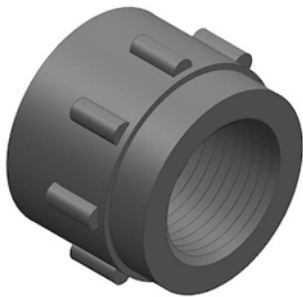
PLAIN FEMALE CAP

CODE	SIZE (MM)	LENGTH (MM)	WIDTH (MM)	HEIGHT (MM)	WEIGHT (KG)
1533343	6	24.4	24.3	24.3	0.01
1533344	10	28.1	28.2	28.2	0.01
1532045	15	33.0	35.2	35.2	0.02
1532046	20	37.0	39.3	39.3	0.03
1532047	25	42.1	48.7	48.7	0.06
1532048	32	48.0	59.3	59.3	0.07
1532049	40	52.9	68.9	68.9	0.13
1532050	50	59.0	79.7	79.7	0.13
1532051	65	66.4	95.8	95.8	0.33
1532052	80	77.8	110.6	110.6	0.42
1532053	100	93.7	139.9	139.9	0.65
1532145	150	123.3	192.0	192.0	1.56
1532146	200	158.8	248.2	248.2	3.44



THREADED CAP BSP FEMALE PARALLEL

CODE	SIZE (MM)	LENGTH (MM)	WIDTH (MM)	HEIGHT (MM)	WEIGHT (KG)
1539004	10	30.0	30.0	20.0	0.01
1539005	15	37.0	37.0	21.0	0.02
1539006	20	40.0	40.0	25.0	0.02
1539007	25	50.5	50.5	26.0	0.04
1539008	32	57.0	59.0	28.0	0.06
1539009	40	65.0	65.0	32.0	0.07
1539010	50	80.0	80.0	38.0	0.13

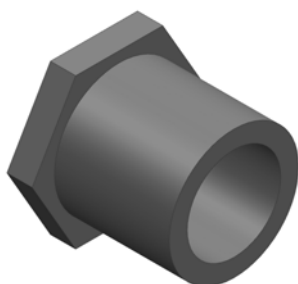


THREADED CAP NPT FEMALE

CODE	SIZE (MM)	LENGTH (MM)	WIDTH (MM)	HEIGHT (MM)	WEIGHT (KG)
1533345	6	23.7	24.8	24.8	0.01
1533346	10	23.8	28.7	28.7	0.01
1533347	15	29.0	35.4	35.4	0.03
1533348	20	31.7	39.9	39.9	0.03
1533349	25	38.3	49.4	49.4	0.06
1533350	32	40.4	59.3	59.3	0.09
1533351	40	43.2	65.9	65.9	0.09
1533352	50	46.3	80.3	80.3	0.17
1533353	65	66.2	94.6	94.6	0.28
1533354	80	71.2	110.9	110.9	0.39
1533355	100	80.1	139.2	139.2	0.66

SCHEDULE 80 UPVC FITTINGS

CAPS & PLUGS



PLAIN MALE SPIGOT PLUG

CODE	SIZE (MM)	LENGTH (MM)	WIDTH (MM)	HEIGHT (MM)	WEIGHT (KG)
1538360	15	27.4	24.6	24.6	0.01
1538361	20	31.7	30.4	30.4	0.02
1538362	25	35.7	38.5	38.5	0.03
1538363	40	43.6	53.3	53.3	0.06
1538364	50	48.2	65.1	65.1	0.09
1538365	100	67.3	126.8	126.8	0.48



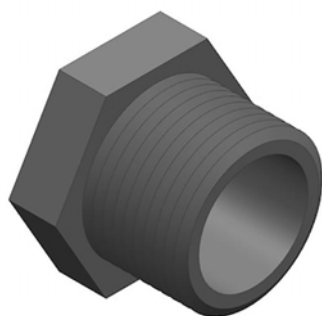
THREADED PLUG BSP MALE PARALLEL

CODE	SIZE (MM)	LENGTH (MM)	WIDTH (MM)	HEIGHT (MM)	WEIGHT (KG)
1537623	20	41.0	36.0	31.0	0.02
1537624	25	48.0	48.0	34.0	0.03
1537627	50	80.0	80.0	43.0	0.12



THREADED PLUG BSP MALE TAPERED

CODE	SIZE (MM)	LENGTH (MM)	WIDTH (MM)	HEIGHT (MM)	WEIGHT (KG)
1539022	10	20.0	20.0	20.0	0.01
1539023	15	26.0	27.0	31.0	0.01
1539024	20	41.0	41.0	30.0	0.02
1539025	25	48.0	48.0	35.0	0.03
1539026	32	53.5	53.5	36.6	0.05
1539027	40	65.0	65.0	40.0	0.07
1539028	50	80.6	80.6	42.8	0.12



THREADED PLUG NPT MALE

CODE	SIZE (MM)	LENGTH (MM)	WIDTH (MM)	HEIGHT (MM)	WEIGHT (KG)
1533356	6	20.7	17.3	17.3	0.00
1533357	10	21.0	20.2	20.2	0.00
1533358	15	25.0	24.7	24.7	0.01
1533359	20	26.9	30.0	30.0	0.01
1533360	25	31.6	38.5	38.5	0.02
1533361	32	33.7	47.1	47.1	0.04
1533362	40	35.2	53.4	53.4	0.05
1533363	50	37.4	65.3	65.3	0.08
1533364	65	49.4	86.9	86.9	0.17
1533365	80	50.3	94.8	94.8	0.21
1533366	100	54.9	120.9	120.9	0.34

SCHEDULE 80 UPVC FITTINGS

NIPPLES



PLAIN MALE SPIGOT ENDED NIPPLE

CODE	SIZE (MM)	LENGTH (MM)	WIDTH (MM)	HEIGHT (MM)	WEIGHT (KG)
1538948	10	1.0	1.0	3.0	0.00
1538949	15	2.0	2.0	4.0	0.00
1538950	20	2.0	2.0	4.0	0.01
1538951	25	3.0	3.0	5.0	0.02
1538952	32	4.0	4.0	6.0	0.03
1538953	40	4.0	4.0	6.0	0.05
1538954	50	6.0	6.0	8.0	0.10
1538955	80	8.0	8.0	11.0	0.23
1538956	100	11.0	11.0	13.0	0.48



TOE NIPPLE BSP MALE TAPERED

CODE	SIZE (MM)	LENGTH (MM)	WIDTH (MM)	HEIGHT (MM)	WEIGHT (KG)
1533223	10	1.6	1.6	4.2	0.01
1532068	15	21.0	21.0	51.0	0.01
1532069	20	54.0	26.0	26.0	0.02
1532070	25	3.3	3.3	6.4	0.03
1532071	32	74.0	41.0	41.0	0.06
1532072	40	8.9	4.6	4.9	0.08
1532073	50	59.0	61.0	87.0	0.11
1532147	80	87.0	89.0	127.0	0.25
1532148	100	11.2	11.5	14.9	0.49

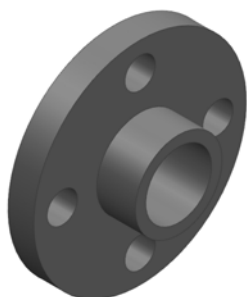


THREADED HEX NIPPLE BSP MALE TAPERED

CODE	SIZE (MM)	LENGTH (MM)	WIDTH (MM)	HEIGHT (MM)	WEIGHT (KG)
1538994	10	38.0	22.0	22.0	0.01
1532099	15	45.0	25.0	25.0	0.01
1532100	20	49.4	30.0	30.0	0.02
1532101	25	56.0	40.0	40.0	0.03
1532102	32	62.0	50.0	50.0	0.05
1532103	40	67.0	53.0	53.0	0.07
1532104	50	75.0	68.0	68.0	0.13

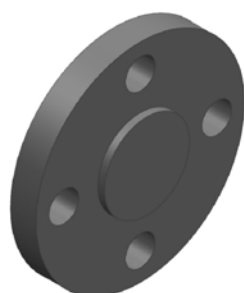
SCHEDULE 80 UPVC FITTINGS

FLANGES



PLAIN FEMALE FLANGE ANSI-150

CODE	SIZE (MM)	LENGTH (MM)	WIDTH (MM)	HEIGHT (MM)	WEIGHT (KG)
1538366	15	25.9	89.0	89.0	0.08
1538367	20	29.0	98.8	98.8	0.12
1538368	25	32.9	108.6	108.6	0.18
1538369	32	36.7	117.7	117.7	0.18
1538370	40	39.1	127.2	127.2	0.33
1538371	50	43.9	152.6	152.6	0.54
1538372	65	50.6	177.8	177.8	0.76
1538373	80	62.5	190.7	190.7	0.97
1538374	100	70.7	229.7	229.7	1.34
1538375	150	98.4	282.7	282.7	2.95
1538376	200	124.5	343.8	343.8	5.22

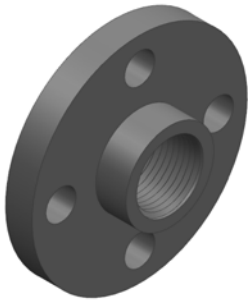


BLIND FLANGE ANSI-150

CODE	SIZE (MM)	LENGTH (MM)	WIDTH (MM)	HEIGHT (MM)	WEIGHT (KG)
1532532	15	12.2	89.1	89.1	0.12
1532533	20	14.0	99.0	99.0	0.16
1532534	25	16.8	108.9	108.9	0.19
1533367	32	18.4	117.2	117.2	0.27
1532535	40	20.5	127.3	127.3	0.35
1532536	50	22.7	152.9	152.9	0.48
1532537	65	24.7	177.8	177.8	0.47
1532538	80	26.2	189.3	189.3	1.19
1532539	100	29.0	227.5	227.5	1.98
1532540	150	38.3	278.2	278.2	3.17
1532541	200	41.0	343.1	343.1	3.86

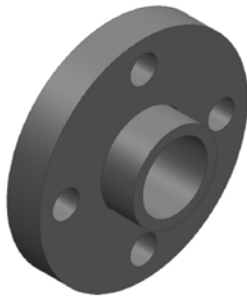
SCHEDULE 80 UPVC FITTINGS

FLANGES



NPT FEMALE THREADED FLANGE ANSI-150

CODE	SIZE (MM)	LENGTH (MM)	WIDTH (MM)	HEIGHT (MM)	WEIGHT (KG)
1538377	15	22.6	89.1	89.1	0.09
1538378	20	23.0	98.7	98.7	0.12
1538379	25	28.7	108.7	108.7	0.19
1538380	32	30.5	117.4	117.4	0.17
1538381	40	30.2	126.8	126.8	0.30
1538382	50	30.9	152.9	152.9	0.52
1538383	65	43.7	177.8	177.8	0.70
1538384	80	54.7	190.5	190.5	0.95
1538385	100	58.4	228.6	228.6	1.30

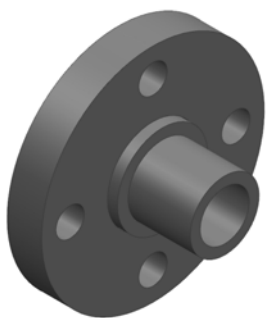


SCHEDULE 80 PVC-U PLAIN FEMALE VAN-STONE FLANGE ANSI-150

CODE	SIZE (MM)	LENGTH (MM)	WIDTH (MM)	HEIGHT (MM)	WEIGHT (KG)
1532521	15	28.0	89.5	89.5	0.09
1532522	20	31.2	98.4	98.4	0.12
1532523	25	35.1	107.8	107.8	0.16
1532524	32	38.6	117.4	117.4	0.19
1532525	40	42.7	127.1	127.1	0.25
1532526	50	46.6	152.9	152.9	0.44
1532527	65	54.6	178.1	178.1	0.80
1532528	80	59.2	190.4	190.4	0.93
1532529	100	69.9	228.5	228.5	1.30
1532530	150	90.0	278.8	278.8	2.10
1532531	200	116.8	343.2	343.2	3.72

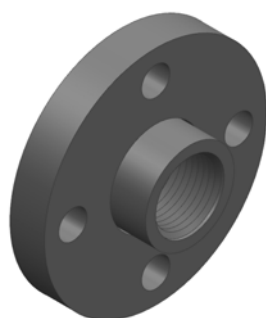
SCHEDULE 80 UPVC FITTINGS

FLANGES



PLAIN MALE SPIGOT VAN-STONE FLANGE ANSI-150

CODE	SIZE (MM)	LENGTH (MM)	WIDTH (MM)	HEIGHT (MM)	WEIGHT (KG)
1538387	15	43.7	89.5	89.5	0.10
1538388	20	46.9	98.4	98.4	0.13
1538389	25	53.4	107.8	107.8	0.17
1538390	32	58.0	117.4	117.4	0.21
1538391	40	63.0	127.1	127.1	0.27
1538392	50	71.1	152.9	152.9	0.47
1538393	65	83.2	178.1	178.1	0.80
1538394	80	91.4	190.4	190.4	0.97
1538395	100	104.1	228.5	228.5	1.35
1538396	150	129.6	278.8	278.8	2.21
1538397	200	174.9	343.2	343.2	4.48

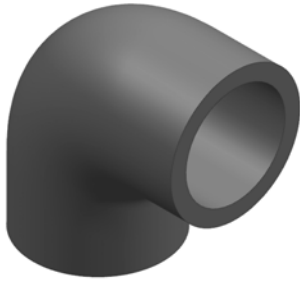


NPT FEMALE THREADED VAN-STONE FLANGE ANSI-150

CODE	SIZE (MM)	LENGTH (MM)	WIDTH (MM)	HEIGHT (MM)	WEIGHT (KG)
1535203	15	27.9	89.5	89.5	0.09
1535204	20	31.1	98.4	98.4	0.12
1535205	25	35.3	107.8	107.8	0.17
1535206	32	38.2	117.4	117.4	0.21
1535207	40	42.4	127.1	127.1	0.26
1535208	50	46.2	152.9	152.9	0.44
1538386	65	54.2	178.1	178.1	0.80
1535209	80	59.9	190.4	190.4	1.21
1535210	100	70.5	228.5	228.5	1.30

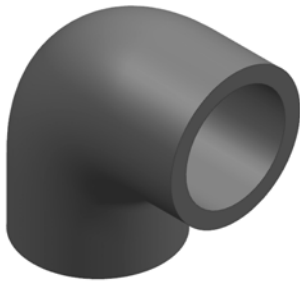
SCHEDULE 80 CPVC FITTINGS

ELBOWS



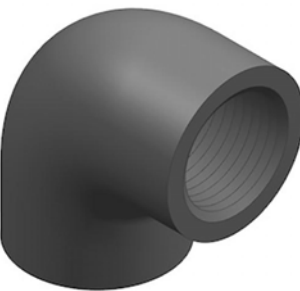
PLAIN FEMALE 90 DEGREE ELBOW

CODE	SIZE (MM)	LENGTH (MM)	WIDTH (MM)	HEIGHT (MM)	WEIGHT (KG)
1538509	15	52.4	29.5	52.4	0.04
1538510	20	61.6	35.3	61.6	0.06
1538511	25	73.0	43.7	73.0	0.11
1538512	32	85.1	52.8	85.1	0.16
1538513	40	94.9	59.6	94.9	0.22
1538514	50	111.9	73.2	111.9	0.34
1538515	65	135.2	89.4	135.2	0.59
1538516	80	154.9	106.0	154.9	0.78
1538517	100	192.8	134.1	192.8	1.38
1538518	150	269.5	192.5	269.5	4.30
1538519	200	352.6	247.7	352.6	6.94



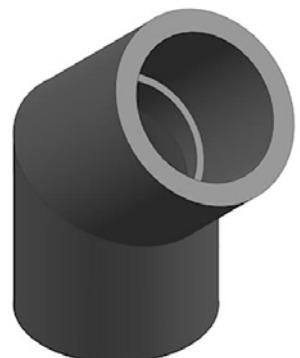
FAUCET 90 DEGREE ELBOW PLAIN FEMALE X NPT FEMALE

CODE	SIZE (MM)	LENGTH (MM)	WIDTH (MM)	HEIGHT (MM)	WEIGHT (KG)
1538520	15 X 15	50.3	31.2	48.0	0.04



THREADED 90 DEGREE ELBOW NPT FEMALE

CODE	SIZE (MM)	LENGTH (MM)	WIDTH (MM)	HEIGHT (MM)	WEIGHT (KG)
1538521	15	47.1	31.4	47.1	0.04
1538522	40	82.4	62.9	82.4	0.22

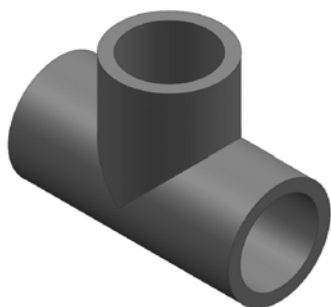


PLAIN FEMALE 45 DEGREE ELBOW

CODE	SIZE (MM)	LENGTH (MM)	WIDTH (MM)	HEIGHT (MM)	WEIGHT (KG)
1538523	15	47.3	29.7	63.4	0.04
1538524	20	53.1	35.2	68.2	0.05
1538525	25	60.2	43.6	79.6	0.08
1538526	32	77.3	53.2	95.9	0.12
1538527	40	84.7	59.7	102.6	0.17
1538528	50	101.3	73.2	119.7	0.27
1538529	65	122.1	89.2	142.6	0.41
1538530	80	138.7	106.3	153.4	0.64
1538531	100	172.8	132.8	190.3	1.07
1538532	150	251.9	192.9	278.9	3.26

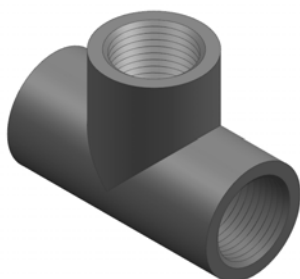
SCHEDULE 80 CPVC FITTINGS

TEES



PLAIN FEMALE TEE

CODE	SIZE (MM)	LENGTH (MM)	WIDTH (MM)	HEIGHT (MM)	WEIGHT (KG)
1538484	15	71.8	29.5	53.2	0.07
1538485	20	81.6	35.4	61.2	0.08
1538486	25	94.3	43.7	71.8	0.15
1538487	32	110.5	52.9	83.7	0.22
1538488	40	123.9	59.4	92.8	0.31
1538489	50	142.7	73.4	109.3	0.44
1538490	65	169.2	89.6	130.2	0.80
1538491	80	189.2	105.7	149.8	1.16
1538492	100	235.1	133.9	189.1	1.89
1538493	150	334.5	192.9	266.7	5.45
1538494	200	441.7	247.3	348.1	9.75

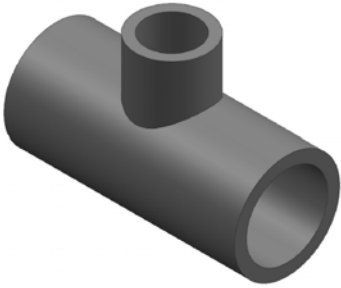


THREADED TEE NPT FEMALE

CODE	SIZE (MM)	LENGTH (MM)	WIDTH (MM)	HEIGHT (MM)	WEIGHT (KG)
1538506	15	64.8	30.9	47.6	0.06
1538507	20	86.3	46.2	68.6	0.16
1538508	25	104.9	62.6	84.0	0.30

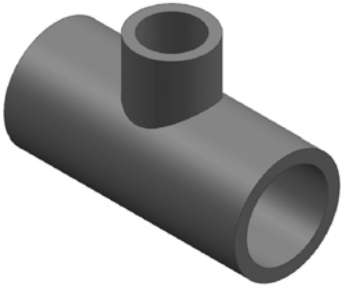
SCHEDULE 80 CPVC FITTINGS

TEES



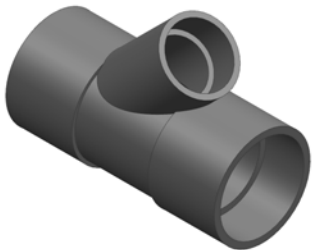
PLAIN FEMALE REDUCING TEE

CODE	SIZE (MM)	LENGTH (MM)	WIDTH (MM)	HEIGHT (MM)	WEIGHT (KG)
1538495	25 X 15	95.1	43.5	66.2	0.15
1538496	40 X 15	97.4	59.5	82.0	0.22
1538497	40 X 25	107.6	59.4	88.5	0.37
1538498	50 X 15	104.0	72.5	95.0	0.22
1538499	50 X 25	113.9	72.5	101.6	0.44
1538500	50 X 40	154.9	88.6	127.0	0.59
1538501	80 X 50	162.6	95.0	133.6	0.78
1538502	100 X 50	179.0	132.6	170.6	2.47
1538503	100 X 80	210.3	133.5	182.0	1.60
1538504	150 X 50	226.0	195.6	229.8	5.78
1538505	150 X 100	333.1	192.4	251.4	4.78



BUSHED PLAIN FEMALE REDUCING TEE

CODE	SIZE (MM)	LENGTH (MM)	WIDTH (MM)	HEIGHT (MM)	WEIGHT (KG)
1538774	150 X 80	333.1	192.4	279.4	5.75
1538775	200 X 100	386.7	247.3	331.7	11.44

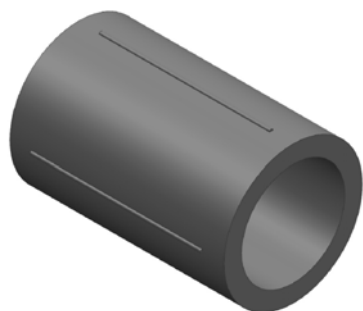


BUSHED PLAIN FEMALE WYE 45 DEGREE

CODE	SIZE (MM)	LENGTH (MM)	WIDTH (MM)	HEIGHT (MM)	WEIGHT (KG)
1538783	100 X 50	328.6	133.1	270.1	2.84

SCHEDULE 80 CPVC FITTINGS

SOCKETS



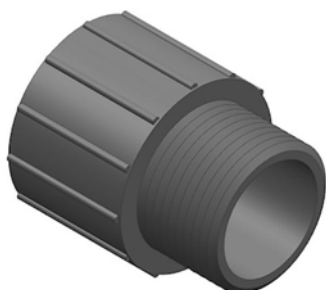
PLAIN FEMALE SOCKET

CODE	SIZE (MM)	LENGTH (MM)	WIDTH (MM)	HEIGHT (MM)	WEIGHT (KG)
1538533	15	49.1	31.1	31.1	0.04
1538534	20	55.4	35.8	35.8	0.06
1538535	25	61.2	43.6	43.6	0.09
1538536	32	67.8	53.0	53.0	0.13
1538537	40	74.7	59.6	59.6	0.18
1538538	50	80.8	72.7	72.7	0.29
1538539	65	95.7	88.6	88.6	0.43
1538540	80	102.6	106.5	106.5	0.48
1538541	100	121.9	133.4	133.4	0.78
1538542	150	162.5	191.9	191.9	1.54
1538543	200	213.3	248.1	248.1	3.59



FAUCET SOCKET PLAIN FEMALE X NPT FEMALE

CODE	SIZE (MM)	LENGTH (MM)	WIDTH (MM)	HEIGHT (MM)	WEIGHT (KG)
1538564	15 X 15	45.6	35.3	35.3	0.04
1538565	20 X 20	49.9	39.6	39.6	0.05
1538566	25 X 25	57.5	48.8	48.8	0.09
1538567	32 X 32	62.1	59.1	59.1	0.12
1538568	40 X 40	65.8	66.0	66.0	0.15
1538569	50 X 50	70.2	79.7	79.7	0.22
1538570	80 X 80	96.5	110.0	110.0	0.51

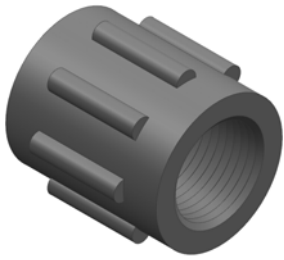


VALVE SOCKET PLAIN FEMALE X NPT MALE

CODE	SIZE (MM)	LENGTH (MM)	WIDTH (MM)	HEIGHT (MM)	WEIGHT (KG)
1538571	15 X 15	46.9	29.6	29.6	0.02
1538572	20 X 20	51.5	35.4	35.4	0.03
1538573	25 X 25	60.4	43.8	43.8	0.05
1538574	32 X 32	64.9	53.0	53.0	0.07
1538575	40 X 40	68.3	59.4	59.4	0.09
1538576	50 X 50	71.9	72.1	72.1	0.13
1538577	80 X 80	93.9	88.4	88.4	0.33
1538578	100 X 100	98.9	106.0	106.0	0.55

SCHEDULE 80 CPVC FITTINGS

SOCKETS



THREADED SOCKET NPT FEMALE

CODE	SIZE (MM)	LENGTH (MM)	WIDTH (MM)	HEIGHT (MM)	WEIGHT (KG)
1538556	15	42.7	35.6	35.6	0.03
1538557	20	44.5	39.9	39.9	0.05
1538558	40	56.4	65.9	65.9	0.12
1538559	50	58.2	79.9	79.9	0.20



PLAIN FEMALE REDUCING SOCKET

CODE	SIZE (MM)	LENGTH (MM)	WIDTH (MM)	HEIGHT (MM)	WEIGHT (KG)
1538544	20 X 15	54.1	38.7	38.7	0.04
1538545	25 X 15	55.1	47.3	47.3	0.07
1538546	25 X 20	57.4	47.2	47.2	0.07
1538547	40 X 25	67.4	63.6	63.6	0.43
1538548	40 X 32	71.5	63.6	63.6	0.13
1538549	50 X 25	80.1	77.4	77.4	0.28
1538550	50 X 40	77.8	77.2	77.2	0.21
1538551	65 X 40	85.4	89.1	89.1	0.23
1538552	80 X 50	91.7	111.7	111.7	0.45
1538553	100 X 80	111.3	140.1	140.1	0.83
1538554	150 X 100	258.4	201.1	201.1	3.31
1538555	200 X 150	233.1	253.9	253.9	3.73



BUSHED PLAIN FEMALE REDUCING SOCKET

CODE	SIZE (MM)	LENGTH (MM)	WIDTH (MM)	HEIGHT (MM)	WEIGHT (KG)
1538776	40 X 15	74.6	63.6	63.6	0.10
1538777	40 X 20	63.6	63.9	63.9	0.43
1538778	50 X 15	87.4	77.4	77.4	0.14
1538779	80 X 40	116.3	106.5	106.5	0.42
1538780	80 X 65	116.3	111.5	111.5	0.71
1538781	100 X 50	125.6	140.1	140.1	1.18

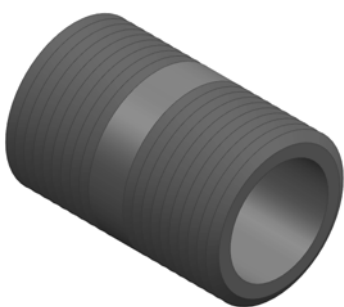
SCHEDULE 80 CPVC FITTINGS

SOCKETS



THREADED REDUCING SOCKET NPT FEMALE

CODE	SIZE (MM)	LENGTH (MM)	WIDTH (MM)	HEIGHT (MM)	WEIGHT (KG)
1538560	15 X 6	36.7	32.6	32.6	0.03
1538561	15 X 10	37.1	32.6	32.6	0.03
1538562	25 X 15	46.7	47.2	47.2	0.07
1538563	40 X 25	52.3	63.6	63.6	0.12



PIPE PIECE NPT MALE

CODE	SIZE (MM)	LENGTH (MM)	WIDTH (MM)	HEIGHT (MM)	WEIGHT (KG)
1538690	20 X 25	50.8	26.7	26.7	0.03
1538691	15 X 32	28.7	21.3	21.3	0.01
1538692	15 X 50	50.8	21.3	21.3	0.02
1538693	15 X 80	76.2	21.3	21.3	0.03
1538694	20 X 32	35.1	26.7	26.7	0.02
1538695	25 X 40	38.1	33.4	33.4	0.03
1538696	40 X 45	44.5	48.3	48.3	0.04
1538697	40 X 50	50.8	48.3	48.3	0.06
1538698	40 X 100	101.6	48.3	48.3	0.12

SCHEDULE 80 CPVC FITTINGS

UNIONS



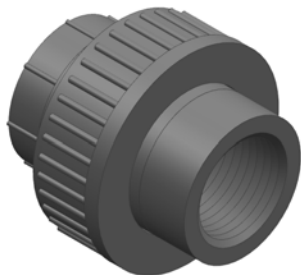
BARREL UNION (PLAIN FEMALE X PLAIN FEMALE) EPDM SEAL

CODE	SIZE (MM)	LENGTH (MM)	WIDTH (MM)	HEIGHT (MM)	WEIGHT (KG)
1538706	15	64.9	50.1	50.1	0.03
1538707	20	71.1	58.8	58.8	0.05
1538708	25	81.8	67.6	67.6	0.07
1538709	32	90.4	78.9	78.9	0.11
1538710	40	95.5	95.5	95.5	0.17
1538711	50	106.0	115.0	115.0	0.29
1538699	80	265.4	105.8	212.9	1.45



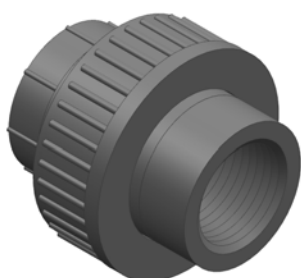
BARREL UNION (PLAIN FEMALE X PLAIN FEMALE) FKM SEAL

CODE	SIZE (MM)	LENGTH (MM)	WIDTH (MM)	HEIGHT (MM)	WEIGHT (KG)
1538700	15	64.9	50.1	50.1	0.03
1538701	20	71.1	58.8	58.8	0.05
1538702	25	81.8	67.6	67.6	0.07
1538703	40	90.4	78.9	78.9	0.17
1538704	50	95.5	95.5	95.5	0.29
1538688	80	119.7	172.9	172.9	1.45
1538689	100	143.2	215.0	215.0	2.14



THREADED UNION (NPT FEMALE) EPDM SEAL

CODE	SIZE (MM)	LENGTH (MM)	WIDTH (MM)	HEIGHT (MM)	WEIGHT (KG)
1538712	15	52.2	50.1	50.1	0.03
1538713	20	53.7	58.8	58.8	0.05
1538714	25	66.1	67.6	67.6	0.07
1538715	40	71.2	78.9	78.9	0.17
1538716	50	70.2	95.5	95.5	0.29

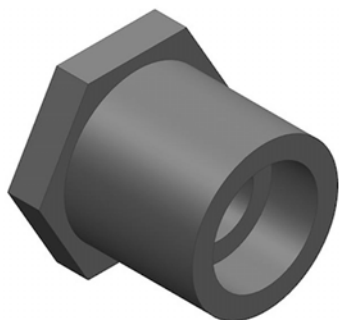


THREADED UNION (NPT FEMALE) FKM SEAL

CODE	SIZE (MM)	LENGTH (MM)	WIDTH (MM)	HEIGHT (MM)	WEIGHT (KG)
1538705	15	106.0	115.0	115.0	0.03

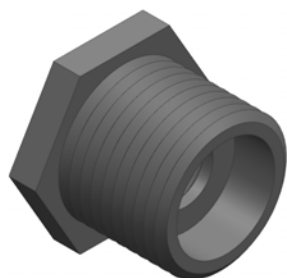
SCHEDULE 80 CPVC FITTINGS

BUSHES



PLAIN REDUCING BUSH

CODE	SIZE (MM)	LENGTH (MM)	WIDTH (MM)	HEIGHT (MM)	WEIGHT (KG)
1538579	15 X 6	29.1	24.9	24.9	0.01
1538580	15 X 10	27.7	25.5	25.5	0.01
1538581	20 X 15	33.1	30.9	30.9	0.01
1538582	25 X 15	36.5	38.9	38.9	0.03
1538583	25 X 20	36.4	38.9	38.9	0.02
1538584	32 X 15	39.3	44.6	44.6	0.05
1538585	32 X 20	39.9	48.0	48.0	0.05
1538586	32 X 25	40.3	47.9	47.9	0.04
1538587	40 X 15	42.8	47.9	47.9	0.07
1538588	40 X 20	42.6	54.0	54.0	0.08
1538589	40 X 25	42.9	54.0	54.0	0.06
1538590	40 X 32	43.6	54.1	54.1	0.04
1538591	50 X 15	46.0	66.0	66.0	0.10
1538592	50 X 20	46.1	65.9	65.9	0.11
1538593	50 X 25	46.4	65.8	65.8	0.11
1538594	50 X 32	45.9	65.8	65.8	0.10
1538595	50 X 40	46.0	65.9	65.9	0.08
1538596	65 X 40	58.6	79.4	79.4	0.18
1538597	65 X 50	53.3	78.0	78.0	0.12
1538598	80 X 25	61.3	94.0	94.0	0.47
1538599	80 X 40	61.8	95.5	95.5	0.34
1538600	80 X 50	61.5	94.0	94.0	0.36
1538601	80 X 65	57.6	93.8	93.8	0.23
1538602	100 X 50	68.6	120.7	120.7	0.57
1538603	100 X 80	69.6	123.7	123.7	0.42
1538604	150 X 80	92.8	176.2	176.2	1.58
1538605	150 X 100	93.1	177.0	177.0	1.78
1538606	200 X 150	118.5	230.4	230.4	2.08

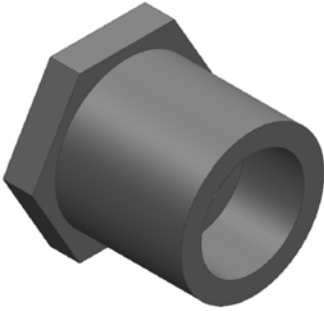


THREADED BUSH NPT

CODE	SIZE (MM)	LENGTH (MM)	WIDTH (MM)	HEIGHT (MM)	WEIGHT (KG)
1538622	20 X 15	27.3	34.6	34.6	0.08
1538623	25 X 15	31.4	38.1	38.1	0.08
1538624	25 X 20	32.4	39.7	39.7	0.05
1538625	40 X 20	33.9	52.9	52.9	0.06
1538626	50 X 25	36.1	64.8	64.8	0.11

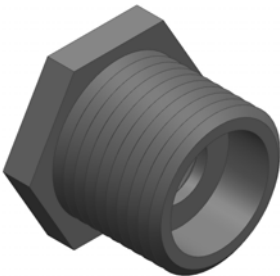
SCHEDULE 80 CPVC FITTINGS

BUSHES



REDUCING BUSH PLAIN MALE X NPT FEMALE

CODE	SIZE (MM)	LENGTH (MM)	WIDTH (MM)	HEIGHT (MM)	WEIGHT (KG)
1538607	15 X 6	28.9	24.8	24.8	0.01
1538608	15 X 20	28.7	24.7	24.7	0.02
1538609	20 X 6	30.8	30.1	30.1	0.02
1538610	20 X 15	32.6	29.4	29.4	0.02
1538611	25 X 5	36.1	38.2	38.2	0.03
1538612	25 X 20	35.8	38.3	38.3	0.03
1538613	32 X 25	39.7	47.1	47.1	0.04
1538614	40 X 20	43.0	53.1	53.1	0.07
1538615	40 X 25	42.7	53.1	53.1	0.07
1538616	50 X 15	45.6	65.1	65.1	0.10
1538617	50 X 20	45.8	65.1	65.1	0.10
1538618	50 X 25	45.8	64.9	64.9	0.11
1538619	50 X 32	46.0	65.0	65.0	0.10
1538620	50 X 40	47.7	65.0	65.0	0.09
1538621	65 X 50	53.9	78.1	78.1	0.18



BUSHED REDUCING BUSH

CODE	SIZE (MM)	LENGTH (MM)	WIDTH (MM)	HEIGHT (MM)	WEIGHT (KG)
1538782	150 X 50	269.5	201.1	201.1	2.35

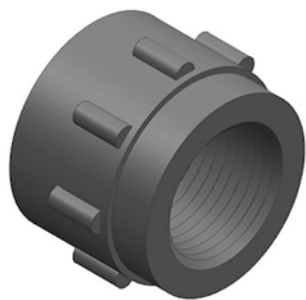
SCHEDULE 80 CPVC FITTINGS

CAPS & PLUGS



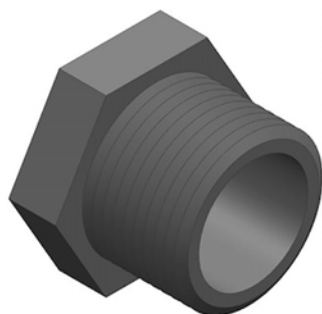
PLAIN FEMALE CAP

CODE	SIZE (MM)	LENGTH (MM)	WIDTH (MM)	HEIGHT (MM)	WEIGHT (KG)
1538627	15	33.0	35.2	35.2	0.03
1538628	20	37.0	39.3	39.3	0.03
1538629	25	42.1	48.7	48.7	0.06
1538630	32	48.0	59.3	59.3	0.08
1538631	40	52.9	68.9	68.9	0.14
1538632	50	59.0	79.7	79.7	0.14
1538633	65	66.4	95.8	95.8	0.36
1538634	80	77.8	110.6	110.6	0.46
1538635	100	93.7	139.9	139.9	0.70
1538636	150	123.3	192.0	192.0	1.69
1538637	200	158.8	248.2	248.2	3.73



THREADED CAP NPT FEMALE

CODE	SIZE (MM)	LENGTH (MM)	WIDTH (MM)	HEIGHT (MM)	WEIGHT (KG)
1538638	25	38.3	49.4	49.4	0.06
1538639	40	43.2	65.9	65.9	0.10
1538640	50	46.3	80.3	80.3	0.18

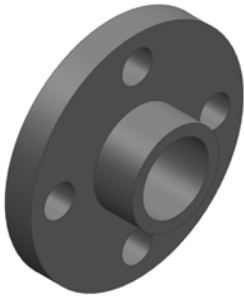


THREADED PLUG NPT MALE

CODE	SIZE (MM)	LENGTH (MM)	WIDTH (MM)	HEIGHT (MM)	WEIGHT (KG)
1538641	10	21.0	20.2	20.2	0.00
1538642	15	25.0	24.7	24.7	0.01
1538643	20	26.9	30.0	30.0	0.01
1538644	25	31.6	38.5	38.5	0.02
1538645	50	37.4	65.3	65.3	0.08

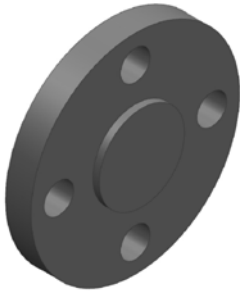
SCHEDULE 80 CPVC FITTINGS

FLANGES



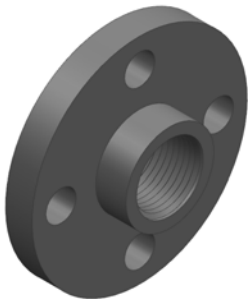
PLAIN FEMALE FLANGE ANSI-150

CODE	SIZE (MM)	LENGTH (MM)	WIDTH (MM)	HEIGHT (MM)	WEIGHT (KG)
1538646	15	25.9	89.0	89.0	0.09
1538647	25	32.9	108.6	108.6	0.20
1538648	32	36.7	117.7	117.7	0.19
1538649	40	39.1	127.2	127.2	0.35
1538650	50	43.9	152.6	152.6	0.59
1538651	65	50.6	177.8	177.8	0.82
1538652	80	62.5	190.7	190.7	1.06
1538653	100	70.7	229.7	229.7	1.45



BLIND FLANGE ANSI-150

CODE	SIZE (MM)	LENGTH (MM)	WIDTH (MM)	HEIGHT (MM)	WEIGHT (KG)
1538658	15	12.2	89.1	89.1	0.13
1538659	20	14.0	99.0	99.0	0.17
1538660	25	16.8	108.9	108.9	0.20
1538661	32	18.4	117.2	117.2	0.29
1538662	40	20.5	127.3	127.3	0.38
1538663	50	22.7	152.9	152.9	0.52
1538664	80	26.2	189.3	189.3	1.29
1538665	100	29.0	227.5	227.5	2.15
1538666	150	38.3	278.2	278.2	3.44
1538667	200	41.0	343.1	343.1	4.19

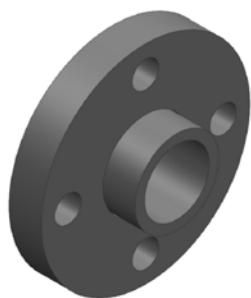


NPT FEMALE THREADED FLANGE ANSI-150

CODE	SIZE (MM)	LENGTH (MM)	WIDTH (MM)	HEIGHT (MM)	WEIGHT (KG)
1538654	15	22.6	89.1	89.1	0.10
1538655	25	28.7	108.7	108.7	0.20
1538656	40	30.2	126.8	126.8	0.32
1538657	50	30.9	152.9	152.9	0.56

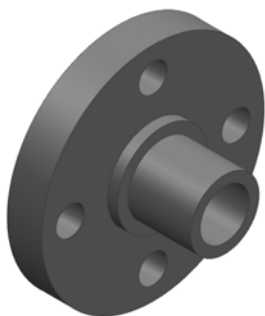
SCHEDULE 80 CPVC FITTINGS

FLANGES



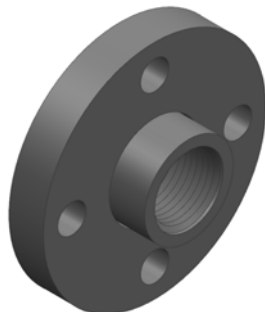
PLAIN FEMALE VAN-STONE FLANGE ANSI-150

CODE	SIZE (MM)	LENGTH (MM)	WIDTH (MM)	HEIGHT (MM)	WEIGHT (KG)
1538668	15	28.0	89.5	89.5	0.10
1538669	20	31.2	98.4	98.4	0.13
1538670	25	35.1	107.8	107.8	0.17
1538671	32	38.6	117.4	117.4	0.21
1538672	40	42.7	127.1	127.1	0.27
1538673	50	46.6	152.9	152.9	0.47
1538674	65	54.6	178.1	178.1	0.87
1538675	80	59.2	190.4	190.4	1.01
1538676	100	69.9	228.5	228.5	1.41
1538677	150	90.0	278.8	278.8	2.28
1538678	200	116.8	343.2	343.2	4.04



PLAIN MALE SPIGOT VAN-STONE FLANGE ANSI-150

CODE	SIZE (MM)	LENGTH (MM)	WIDTH (MM)	HEIGHT (MM)	WEIGHT (KG)
1538681	15	43.7	89.5	89.5	0.10
1538682	25	53.4	107.8	107.8	0.18
1538683	40	63.0	127.1	127.1	0.29
1538684	50	71.1	152.9	152.9	0.51
1538685	65	83.2	178.1	178.1	0.87
1538686	80	91.4	190.4	190.4	1.05
1538687	150	129.6	278.8	278.8	2.40



NPT FEMALE THREADED VAN-STONE FLANGE ANSI-150

CODE	SIZE (MM)	LENGTH (MM)	WIDTH (MM)	HEIGHT (MM)	WEIGHT (KG)
1538679	25	35.3	107.8	107.8	0.18
1538680	40	42.4	127.1	127.1	0.28

SCHEDULE 80 UPVC FITTINGS

PIPE CLIPS



PIPE CLIPS

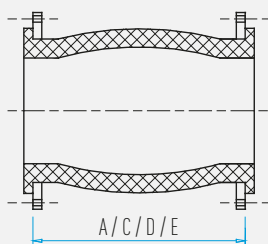
CODE	DESCRIPTION	SIZE
R05.434.015	1/2" Pipe Clip	1/2"
R05.434.020	3/4" Pipe Clip	3/4"
R05.434.025	1" Pipe Clip	1"
R05.434.032	1 1/4" Pipe Clip	1 1/4"
R05.434.040	1 1/2" Pipe Clip	1 1/2"
R05.434.050	2" Pipe Clip	2"
R05.434.065	2 1/2" Pipe Clip	2 1/2"
R05.434.080	3" Pipe Clip	3"
R05.434.100	4" Pipe Clip	4"

PIPE CLIPS - TYPE F

CODE	DESCRIPTION	SIZE
R05.434.080F	3" Pipe Clip	3"
R05.434.100F	4" Pipe Clip	4"
R05.434.150F	6" Pipe Clip	6"

SCHEDULE 80 UPVC FITTINGS

CEMENT & PRIMER



A = Natural Length D = Angular Deflection
 C = Axial Compression E = Axial Extension

CEMENT

CODE	DESCRIPTION	SIZE
R32.461.050	PVC-U SCH80 CEMENT 500ML	500ML
R32.461.100	PVC-U SCH80 CEMENT 1LTR	1LTR

PRIMER

CODE	DESCRIPTION	SIZE
R32.463.050	PVC-U SCH80 PRIMER 500ML	500ML
R32.463.100	PVC-U SCH80 PRIMER 1LTR	1LTR

RUBBER EXPANSION JOINT

CODE	SIZE	A MM	C MM	D °	E MM	PN RATING
R04.452.032	DN 32 S1	95	8	15°	4	15
R04.452.040	DN 40 S1	95	8	15°	4	15
R04.452.050	DN 50 S1	105	8	15°	5	15
R04.452.080	DN 80 S1	130	12	15°	6	15
R04.452.100	DN 100 S1	135	18	15°	10	15
R04.452.150	DN 150 S1	180	18	15°	10	15
R14.452.225	DN 200 S1	205	25	15°	14	15
R14.452.250	DN 225 S1	240	25	15°	14	15
R14.452.315	DN 300 S1	260	25	15°	14	15
R14.452.355	DN 350 S1	265	25	15°	14	9
R14.452.400	DN 375 S1	265	25	15°	14	9

GEORG FISCHER SCHEDULE 80 VALVES

VALVES



DOUBLE UNION BALL VALVE (PLAIN FEMALE X PLAIN FEMALE)
EPDM SEAL

CODE	SIZE (MM)	LENGTH (MM)	WIDTH (MM)	HEIGHT (MM)	WEIGHT (KG)
1538806	10	105.0	51.0	87.0	0.16
1538807	15	135.0	85.0	60.0	0.23
1538808	20	120.0	98.0	58.0	0.25
1538809	25	158.0	83.0	113.0	0.48
1538810	32	175.0	90.0	140.0	0.80
1538811	40	199.0	154.0	111.0	1.09
1538812	50	225.0	185.0	130.0	1.92
1538813	65	262.0	224.0	408.0	4.36
1538814	80	244.0	201.0	258.0	5.38
1538815	100	387.0	293.0	400.0	9.63



DOUBLE UNION BALL VALVE (PLAIN FEMALE X PLAIN FEMALE)
EPDM SEAL ASTM US IMPERIAL

CODE	SIZE (MM)	LENGTH (MM)	WIDTH (MM)	HEIGHT (MM)	WEIGHT (KG)
1538323	15	80.0	78.0	78.0	0.13
1538324	20	91.0	90.0	90.0	0.21
1538325	25	102.0	101.0	101.0	0.31
1538326	32	120.0	119.0	119.0	0.45
1538327	40	140.0	137.0	137.0	0.70
1538328	50	169.0	165.0	165.0	1.20



DOUBLE UNION BALL VALVE (PLAIN FEMALE X PLAIN FEMALE) FKM SEAL

CODE	SIZE (MM)	LENGTH (MM)	WIDTH (MM)	HEIGHT (MM)	WEIGHT (KG)
1538797	10	90.0	50.0	90.0	0.15
1538798	15	100.0	50.0	90.0	0.15
1538799	20	110.0	60.0	100.0	0.23
1538800	25	120.0	70.0	110.0	0.33
1538801	32	150.0	90.0	140.0	0.59
1538802	40	160.0	97.0	150.0	0.86
1538803	50	185.0	125.0	190.0	1.58
1538804	80	247.0	201.0	257.0	5.40
1538805	100	275.0	239.0	307.0	8.58



BUTTERFLY VALVE PVC-U WAFER EPDM SEAL

CODE	SIZE (MM)	LENGTH (MM)	WIDTH (MM)	HEIGHT (MM)	WEIGHT (KG)
1538816	50	350.0	170.0	220.0	1.65
1538817	65	264.0	107.0	227.0	1.35
1538818	80	275.0	145.0	145.0	1.52
1538819	100	195.0	160.0	320.0	2.19
1538820	125	360.0	110.0	350.0	2.54
1538821	150	390.0	210.0	260.0	4.27
1538822	200	272.0	209.0	462.0	6.48