



SEWER OB JUNCTION CLAMPS

DN 100 - DN 450

FOR FAST, PERMANENT BRANCH CONNECTIONS ON NON-PRESSURE SEWER PIPELINES



FEATURES

- Simple and permanent installation
- Quickly repairs and reconnects broken sewer junctions
- Expedient means of replacing property branches on renewed/relined pipes
- 45° and 90° junctions available
- uPVC access coupling fixed to off-take (as standard) for convenient solvent weld connections to PVC property drains
- Fully constructed from 316 stainless steel for high corrosion protection
- Full circle nitrile rubber gasket
- Fully passivated
- All sharp surfaces finished to avoid injury
- Plastic thread protectors
- Dry film anti-galling coating employed to minimise galling of the stainless steel fasteners
- Off-take does not interfere with CCTV camera inspections
- Clamp design provides rehabilitation to old or damaged pipes
- Manufacturing facility certified to ISO 9001 quality assured standard

DESCRIPTION

Stainless steel Sewer Junction Clamps for fast and permanent sewer branch connections and repairs on non-pressure sewer pipelines

DN 100 - DN 450.

APPLICATION

Ideally suited to installing a new property sewer branch on an existing main, or to repair and reconnect a damaged property branch. Ideal for reconnecting a property branch on renewed or relined sewers

TECHNICAL DATA

Size Range: DN 100 – DN 450

Offtake Sizes: DN 100, DN 150, DN 225 (Depending on host pipe size)

Maximum Operating Pressure: 100 kPa

Temperature Range: -10° to 60°C

WANG CLAMPS & COUPLINGS

WANG is one of the leading manufacturers and suppliers of Grade 316 Stainless Steel Repair and Tapped Clamps as well as Couplings for reticulated water, sewerage and gas mains including industrial piping systems.

WANG products have become synonymous with quality and reliability. Our product range is widely utilised and relied upon by Water Authorities and Councils throughout Australia in the installation and maintenance of their supply mains and reticulation network.

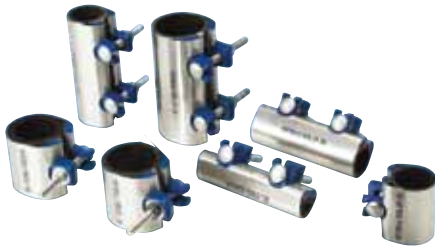


WANG products can be sourced through the Viadux national sales and service network of customer centres.

Viadux is a specialist in integrated solutions for all your water and wastewater pipeline system requirements.

KWIK CLAMPS

A full circle repair clamp for small bore galvanised steel, copper and PVC pipe. DN 15 - DN 50



REPAIR CLAMPS

A fast, permanent and economical repair solution for most pipe types and sizes. DN 50 - DN 1200



TAPPED CLAMPS

A reliable means of tapping into old, unstable or damaged pipe. DN 50 - DN 1200



TAPPING SADDLES

Permanent tapping solution for both rigid and flexible pipe. DN 40 - DN 450



FLANGED OFFTAKE CLAMPS

A cost effective means of achieving a "T" connection or under pressure tapping. DN 100 - DN 900



SEWER OB JUNCTION CLAMPS

A quick method of installing a new property service connection on a sewer main. DN 100 - DN 450



VARI-FLANGED COUPLINGS

Enable connection between a stub ended pipe and a mating flanged face. DN 80 - DN 600



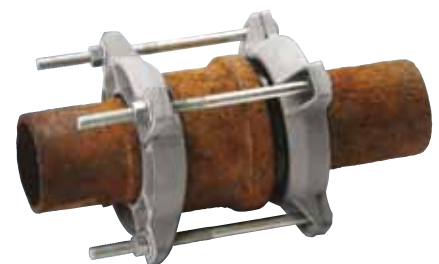
HIGH PRESSURE COUPLINGS

Provides a mechanical joint between similar or dissimilar pipes in high pressure environments. DN 150 - DN 2000



SOCKET JOINT LEAK CLAMPS

Provide a permanent and economical seal over a leaking socket-spigot joint. DN 80 - DN 1200



DISTRIBUTED BY VIADUX

ADELAIDE
P: 08 8340 3411
F: 08 8340 3422
E: ccasales@viadux.com.au

BRISBANE
P: 07 5589 4400
F: 07 5534 7079
E: ccbsales@viadux.com.au

DARWIN
P: 08 8935 3300
F: 08 8947 3981
E: ccdsales@viadux.com.au

GOLD COAST
P: 07 5589 4400
F: 07 5534 7079
E: ccgsales@viadux.com.au

MELBOURNE
P: 03 9309 9133
F: 03 9309 6237
E: ccmsales@viadux.com.au

PERTH
P: 08 9346 8500
F: 08 9346 8501
E: ccpsales@viadux.com.au

SYDNEY
P: 02 9794 3440
F: 02 9794 3499
E: ccssales@viadux.com.au

TOWNSVILLE
P: 07 4725 5940
F: 07 4725 4995
E: cctsales@viadux.com.au

WANG COMPONENTS

CNR GIBSON STREET & SANDFORD ROAD, WANGARATTA, VICTORIA 3677
PHONE 03 5722 7400 / FAX 03 5722 7444

All WANG trademarks and logos are owned by Wang Components. All other brand or product names are trademarks or registered marks of their respective owners. Because we are continuously improving our products and services, Wang Components reserves the right to change specifications without prior notice. AP0315 © 2015 Wang Components. All Rights Reserved.

