



MULTI-TAP SADDLE

DN 100 AND DN 150

MULTI RANGE ADAPTABLE TAPPING SOLUTION FOR QUICK APPLICATION

FEATURES

The Multi-Tap tapping band adapts to DI, CI, AC, Series 1 & 2 PVC pipes of the same DN size

The unique wrap around and hook-on design simplifies adjustment at time of installation

Fully passivated 316 stainless steel back strap and fastening mechanism underscores the quality of the product

Dry film coating employed to minimize galling of the stainless steel fastener

Nitrile rubber back strap gasket employed to isolate against galvanic corrosion between pipe and saddle

EPDM centre ring seal ensures a water tight tapping with AS/NZS 4020 potable water compliance



DESCRIPTION

Multi-Tap Saddles are a wrap & hook design that are capable of adapting to most pipe types of the same nominal diameter. The unique hook-on design greatly simplifies the application and ensures a quick and easy installation

APPLICATION

The hook-on design enables a multi-pipe adaptability that permits a significantly larger OD range capability in the saddle's application, thereby permitting installation on most pipe types within the DN100 and DN150 range

TECHNICAL DATA

Size Range: DN 100 and DN 150

Offtake Sizes: DN 20 to DN 50

Maximum Operating Pressure: 1600 kPa

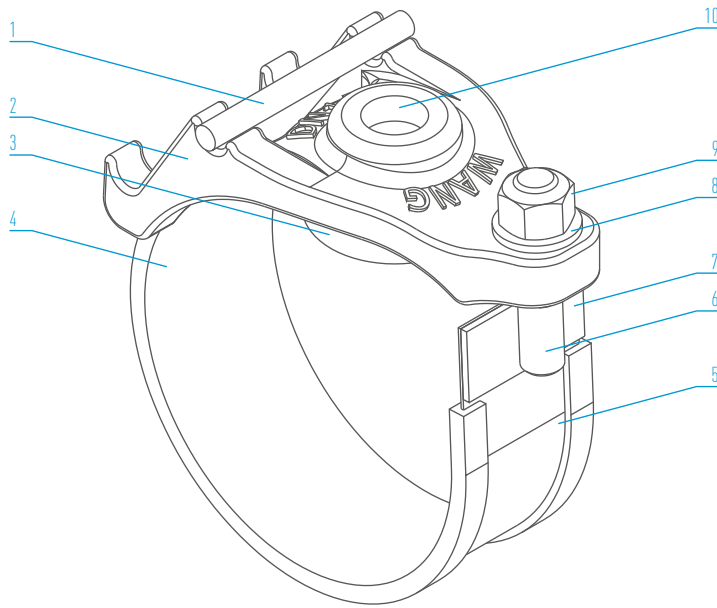
Temperature Range: -10° to 60°C

Relevant Standards: AS/NZS 4020 suitable for potable water application

MULTI-TAP SADDLE

DN 100 AND DN 150

MULTI RANGE ADAPTABLE TAPPING SOLUTION FOR QUICK APPLICATION



PARTS LIST

No.	Description / Material / Standard
1	Bar 316 Stainless Steel / ASTM A276
2	Body Ductile Iron / AS 1831 Fusion Bonded Epoxy Coating / AS/NZS 4158
3	O-Ring Seal EPDM Rubber / AS 1646 & AS/NZS 4020
4	Back Strap Cover Nitrile Rubber / AS 1646
5	Back Strap 316 Stainless Steel / ASTM A240
6	Stud 316 Stainless Steel / ASTM A276 Anti-Galling compound coated
7	Flat 316 Stainless Steel / ASTM A240
8	Washer 316 Stainless Steel / ISO 887
9	Nut 316 Stainless Steel / ISO 4032 & AS 1112.1
10	BSP Thread - RP ISO 7.1

STANDARD CLAMP DATA

Nom Size DN	Clamp OD Multi Range. mm	Offtake Size mm	No. of Studs	Stud Size	No. of Saddle Segments	Rec Torque Setting. Nm
100	114-120 122-128	20, 25, 32, 40, 50	1	M16	2	50
150	160-166 177-183	20, 25, 32, 40, 50	1	M16	2	50

MULTI-TAP SADDLE TYPICAL SPECIFYING SEQUENCE

Example	KT ND 100 020
KT = Tapping Saddle	
ND = Saddle nominal diameter sizing	
100 = Saddle nominal diameter	
020 = Offtake nominal diameter	
020 = dn20, 025 = dn25, 032 = dn32	
040 = dn40, 050 = dn50	

WANG CLAMPS & COUPLINGS

WANG is one of the leading manufacturers and suppliers of Grade 316 Stainless Steel Repair and Tapped Clamps as well as Couplings for reticulated water, sewerage and gas mains including industrial piping systems.

WANG products have become synonymous with quality and reliability. Our product range is widely utilised and relied upon by Water Authorities and Councils throughout Australia in the installation and maintenance of their supply mains and reticulation network.

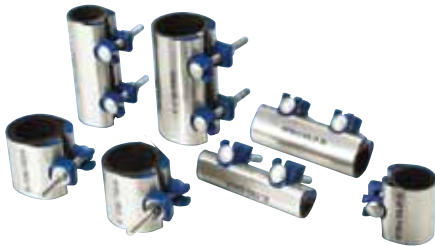


WANG products can be sourced through the Viadux national sales and service network of customer centres.

Viadux is a specialist in integrated solutions for all your water and wastewater pipeline system requirements.

KWIK CLAMPS

A full circle repair clamp for small bore galvanised steel, copper and PVC pipe. DN 15 - DN 50



REPAIR CLAMPS

A fast, permanent and economical repair solution for most pipe types and sizes. DN 50 - DN 1200



TAPPED CLAMPS

A reliable means of tapping into old, unstable or damaged pipe. DN 50 - DN 1200



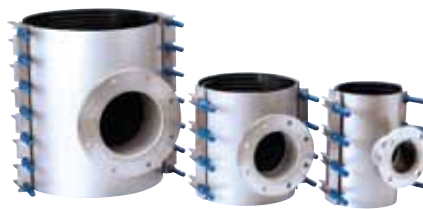
TAPPING SADDLES

Permanent tapping solution for both rigid and flexible pipe. DN 40 - DN 450



FLANGED OFFTAKE CLAMPS

A cost effective means of achieving a "T" connection or under pressure tapping. DN 100 - DN 900



SEWER OB JUNCTION CLAMPS

A quick method of installing a new property service connection on a sewer main. DN 100 - DN 450



VARI-FLANGED COUPLINGS

Enable connection between a stub ended pipe and a mating flanged face. DN 80 - DN 600



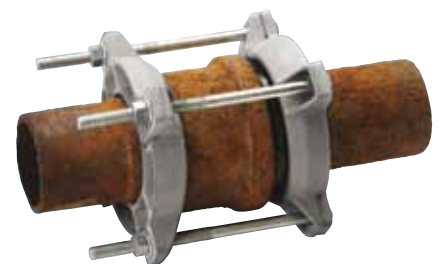
HIGH PRESSURE COUPLINGS

Provides a mechanical joint between similar or dissimilar pipes in high pressure environments. DN 150 - DN 2000



SOCKET JOINT LEAK CLAMPS

Provide a permanent and economical seal over a leaking socket-spigot joint. DN 80 - DN 1200



DISTRIBUTED BY VIADUX

ADELAIDE
P: 08 8340 3411
F: 08 8340 3422
E: ccasales@viadux.com.au

BRISBANE
P: 07 5589 4400
F: 07 5534 7079
E: ccbsales@viadux.com.au

DARWIN
P: 08 8935 3300
F: 08 8947 3981
E: ccdsales@viadux.com.au

GOLD COAST
P: 07 5589 4400
F: 07 5534 7079
E: ccgsales@viadux.com.au

MELBOURNE
P: 03 9309 9133
F: 03 9309 6237
E: ccmsales@viadux.com.au

PERTH
P: 08 9346 8500
F: 08 9346 8501
E: ccpsales@viadux.com.au

SYDNEY
P: 02 9794 3440
F: 02 9794 3499
E: ccssales@viadux.com.au

TOWNSVILLE
P: 07 4725 5940
F: 07 4725 4995
E: cctsales@viadux.com.au

WANG COMPONENTS

CNR GIBSON STREET & SANDFORD ROAD, WANGARATTA, VICTORIA 3677
PHONE 03 5722 7400 / FAX 03 5722 7444

All WANG trademarks and logos are owned by Wang Components. All other brand or product names are trademarks or registered marks of their respective owners. Because we are continuously improving our products and services, Wang Components reserves the right to change specifications without prior notice. AP0315 © 2015 Wang Components. All Rights Reserved.

