



BLANK END VARI-GIB COUPLING

DN 80 - DN 250

NON-RESTRAINED MECHANICAL COUPLING BLANK FOR SEALING OFF PIPE ENDS

FEATURES

The variable OD range of each coupling often enables application on more than one pipe type and size, thereby significantly reducing stockholding requirements

Compatible with most pipe types

Specially designed wedge shaped nitrile rubber gasket is suitable for use with water, wastewater and gas mediums

Fasteners have a captive head configuration to enable single spanner operation, facilitating ease of field assembly

Fasteners are 316 stainless steel for extended longevity

A three bolt design is used in sizes up to DN 150 for ease of installation

A 'Tapping Pad' on the blank end permits a drain flush or sampling point to be added to the system

Manufacturing facility certified to the ISO 9001 Quality Assured Standard



DESCRIPTION

Vari-Gib non-restrained blank end couplings offer a convenient and effective means of blanking off a pipe end

The design provides a convenient location for a drain flush or sampling point to be incorporated into the system

APPLICATION

The variable OD Vari-Gib coupling design provides an effective mechanical method of installing a blank-end at a pipe termination point

Suitable for potable water, wastewater and gas applications. If used in a gas application, prior approval needs to be obtained from the asset manager for its use

TECHNICAL DATA

Size Range: DN 80 – DN 250 (see reverse)

Maximum Operating Pressure: 1600 kPa

Temperature Range: -10° to 60° C

Relevant Standards: AS/NZS 4998
Lic. No SMKP25236

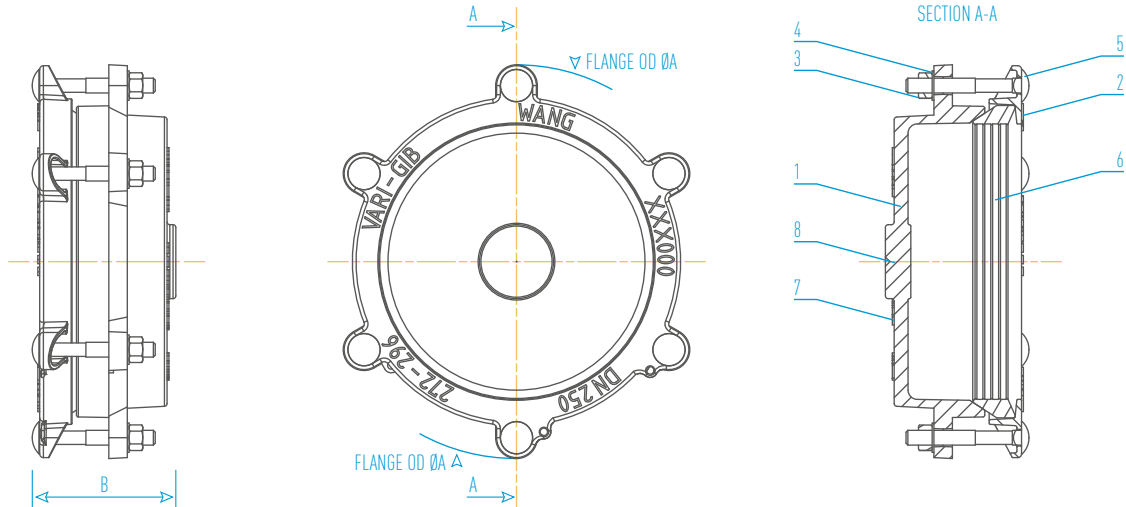
Notes:

1. Product not recommended for use on HDPE pipe
2. Vari-Gib blank ends are a non-restrained mechanical coupling and adequate shoring will be required at the fitting to prevent axial dislodgement under pressure

BLANK END VARI-GIB COUPLING

DN 80 - DN 250

NON-RESTRAINED MECHANICAL BLANK FOR SEALING OFF PIPE ENDS



STANDARD BLANK END VARI-GIB COUPLING DATA

Nom Size mm	Clamp OD Range. mm		Bolts		Flange OD ØA. mm	Overall Length B. mm	Approx Weight. kg
	Start	End	Qty	Size			
80	88	103	3	M16	238	140	6.3
100	109	133	3	M16	263	150	8.9
150	158	182	3	M16	312	150	11.6
200	214	238	5	M16	371	150	17.1
225	240	264	5	M16	399	150	19.3
250	272	296	6	M16	431	150	23.9

Note: 1. Overall Length [B] is only indicative and will vary depending on the pipe OD
 2. Maximum pipe insertion length within the fitting is recommended

PARTS LIST

No.	Description / Material / Standard
1	Body - cast end cap & barrel Ductile Iron / AS 1831
2	Coupling flange Ductile Iron / AS 1831
3	Nuts 316 stainless steel / anti-galling compound coated / AS 1112.1
4	Washers 316 stainless steel / ISO 887 / ISO 7089
5	Cup head bolts - M16 x 125mm 316 stainless steel / DIN 603
6	Coupling gasket Nitrile (NBR) Compound / AS 1646 & AS/NZS 4020
7	Coating Fusion coated / AS/NZS 4158
8	Tapping point

BLANK END VARI-GIB COUPLING

TYPICAL SPECIFYING SEQUENCE

Example	KV	B	100	D	S
KV = Vari-Gib					
B = Blank End					
100 = applicable pipe dia (DN) Select from above - Standard Data table					
D = DI Fusion Coated Body and Flanges					
S = 316 Stainless Steel Fasteners					

WANG CLAMPS & COUPLINGS

WANG is one of the leading manufacturers and suppliers of Grade 316 Stainless Steel Repair and Tapped Clamps as well as Couplings for reticulated water, sewerage and gas mains including industrial piping systems.

WANG products have become synonymous with quality and reliability. Our product range is widely utilised and relied upon by Water Authorities and Councils throughout Australia in the installation and maintenance of their supply mains and reticulation network.

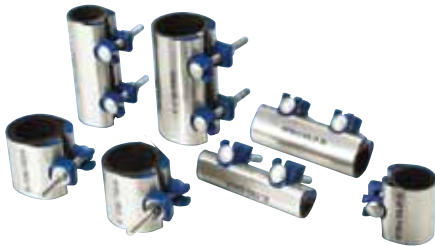


WANG products can be sourced through the Viadux national sales and service network of customer centres.

Viadux is a specialist in integrated solutions for all your water and wastewater pipeline system requirements.

KWIK CLAMPS

A full circle repair clamp for small bore galvanised steel, copper and PVC pipe. DN 15 - DN 50



REPAIR CLAMPS

A fast, permanent and economical repair solution for most pipe types and sizes. DN 50 - DN 1200



TAPPED CLAMPS

A reliable means of tapping into old, unstable or damaged pipe. DN 50 - DN 1200



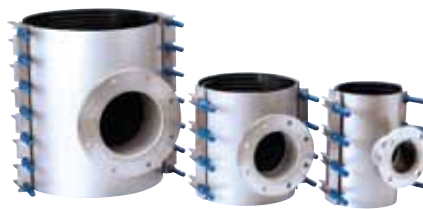
TAPPING SADDLES

Permanent tapping solution for both rigid and flexible pipe. DN 40 - DN 450



FLANGED OFFTAKE CLAMPS

A cost effective means of achieving a "T" connection or under pressure tapping. DN 100 - DN 900



SEWER OB JUNCTION CLAMPS

A quick method of installing a new property service connection on a sewer main. DN 100 - DN 450



VARI-FLANGED COUPLINGS

Enable connection between a stub ended pipe and a mating flanged face. DN 80 - DN 600



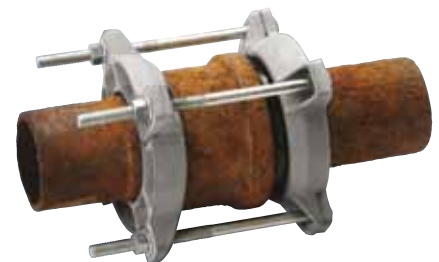
HIGH PRESSURE COUPLINGS

Provides a mechanical joint between similar or dissimilar pipes in high pressure environments. DN 150 - DN 2000



SOCKET JOINT LEAK CLAMPS

Provide a permanent and economical seal over a leaking socket-spigot joint. DN 80 - DN 1200



DISTRIBUTED BY VIADUX

ADELAIDE
P: 08 8340 3411
F: 08 8340 3422
E: ccasales@viadux.com.au

BRISBANE
P: 07 5589 4400
F: 07 5534 7079
E: ccbsales@viadux.com.au

DARWIN
P: 08 8935 3300
F: 08 8947 3981
E: ccdsales@viadux.com.au

GOLD COAST
P: 07 5589 4400
F: 07 5534 7079
E: ccgsales@viadux.com.au

MELBOURNE
P: 03 9309 9133
F: 03 9309 6237
E: ccmsales@viadux.com.au

PERTH
P: 08 9346 8500
F: 08 9346 8501
E: ccpsales@viadux.com.au

SYDNEY
P: 02 9794 3440
F: 02 9794 3499
E: ccssales@viadux.com.au

TOWNSVILLE
P: 07 4725 5940
F: 07 4725 4995
E: cctsales@viadux.com.au

WANG COMPONENTS

CNR GIBSON STREET & SANDFORD ROAD, WANGARATTA, VICTORIA 3677
PHONE 03 5722 7400 / FAX 03 5722 7444

All WANG trademarks and logos are owned by Wang Components. All other brand or product names are trademarks or registered marks of their respective owners. Because we are continuously improving our products and services, Wang Components reserves the right to change specifications without prior notice. AP0315 © 2015 Wang Components. All Rights Reserved.

